



**FRWD**  
Front Range  
Waste Diversion

# FRONT RANGE WASTE DIVERSION

## Pueblo RecycleWorks Expansion Study



Technical Assistance  
Service Provider



Final Report  
April 2024

## Contents

<b>Section 1: Project Summary</b> .....	<b>2</b>
<b>Section 2: Facility Tours</b> .....	<b>7</b>
Stop 1: Pueblo RecycleWorks .....	7
Stop 2: Roots Recycling .....	10
Stop 3: Driven Plastic .....	10
Stop 4: City of Pueblo Department of Public Works - Voucher Desk .....	11
Key Findings .....	11
<b>Section 3: System Evaluation</b> .....	<b>12</b>
RecycleWorks Summary .....	12
Annual Tonnage Data & Site Usage.....	13
Large Item and Tire Voucher Program.....	15
Past CPDHE Grant Applications .....	17
RREO Recycling Rebate .....	19
End Market Contracts .....	20
Current Challenges with Plastic #1 and #2.....	23
Extended Producer Responsibility Considerations .....	25
Household Hazardous Waste (HHW) Program Analysis .....	27
RecycleWorks Program Marketing .....	32
<b>Section 4: Slash and Mulch Site</b> .....	<b>34</b>
<b>Section 5: Recommendations</b> .....	<b>38</b>
Overall .....	38
Short-Term.....	39
Material-Specific .....	39
Household Hazardous Waste (HHW) Program Options.....	40
Slash/Mulch Program.....	40
Online Resources and Marketing.....	40
<b>Appendix A: Tour Photos</b> .....	<b>42</b>
<b>Appendix B: Facility Tour Attendees</b> .....	<b>51</b>
<b>Appendix C: Pueblo RecycleWorks Flyer</b> .....	<b>52</b>
<b>Appendix D: Pueblo Recycle Guide</b> .....	<b>53</b>
<b>Appendix E: Pueblo County Public Health Recycling Guide</b> .....	<b>56</b>

## Section 1: Project Summary

With the support of the FRWD Technical Assistance Service Provider (TASP) program, the Pueblo Department of Public Health and Environment (Pueblo County Public Health or PDPHE)<sup>1</sup> conducted a study on the recycling services available to Pueblo County residents at the Pueblo RecycleWorks recycling drop-off facility. Project goals included identifying ways to make the site more accessible to Pueblo County residents and identifying opportunities to expand the materials accepted at the facility. The following sections of this report describe key project activities, such as facility tours, a system evaluation, and a slash/mulch analysis, that informed the TASP team’s final recommendations.

### Facility Tour Findings

On Thursday, January 11, 2024, the TASP project team visited the Pueblo RecycleWorks, Roots Recycling, Driven Plastics, and the Pueblo Department of Public Works. The tour included observations of the RecycleWorks recycling drop-off operation (before and after the site opened), Roots Recycling’s operations, the production processes at Driven Plastics, and the voucher request process at the Pueblo Department of Public Works office. The tours were coordinated by TASP and attended by a combination of PDPHE, Pueblo County, City of Pueblo, Driven Plastics, and CDPHE staff as well as the TASP project team.



Several key findings from the facility tours include:

- **Overall, the RecycleWorks site is well managed and operated.** The site was busy right at opening, despite strong wind and 30-degree temperatures. All materials on site looked clean and the relatively new arrangements to collect plastic film and to collect glass in a roll-off for transport to Glass to Glass were both going very well.
- **There are opportunities to expand amounts and types of materials accepted at the drop-off.** While lack of shelter for staff and materials on inclement weather days was observed as a potential challenge, the site does have room for adding new materials or for expanding acceptance of existing materials. Additionally, the tour found that there

---

<sup>1</sup> The Pueblo Department of Public Health and Environment (PDPHE) was established in 1952 through a partnership with the City and the County of Pueblo. PDPHE is governed by the Board of Health, a five-member board appointed by Pueblo City Council and Pueblo County Commissioners.

is potentially room to do some organics processing on site or on an adjacent site owned by the City.

- **Requiring residents to visit the Pueblo Public Works permit office in-person is a significant barrier to accessing the large item and tire vouchers.** Despite RecycleWorks having both weekday and weekend hours, the Public Works office is only open during regular business hours, Monday through Friday from 8 a.m. to 4:30 p.m.
- **Rigid plastic recycling is a challenge.** Roots Recycling is experiencing operational challenges with sorting and baling plastic containers from RecycleWorks and other sources. According to Roots staff, this could result in a short-term pause in services. Grant funding for a new baler was identified as a possible solution to the current challenges.

## System Evaluation

The project team analyzed Pueblo RecycleWorks’ annual tonnage data and voucher redemption data, past recycling rebate and grant application submission data, existing household hazardous waste (HHW) services and potential program options, potential impacts related to the new Producer Responsibility program, and existing program marketing activities. The project team also interviewed several existing and potential end market partners.

### Pueblo RecycleWorks

Est. 2018

#### 2023 SUMMARY

Total Diversion: 511 tons

Total Visitors: 20,895

Average Daily Visitors: 100

Most Collected Item (in tons): Cardboard

Large Items Collected: 1,233

Tires Collected: 789

## Slash / Mulch Site Analysis

The TASP project team examined two possible locations for slash collection and mulching. One location is located within the existing footprint of RecycleWorks and the other utilizes the lot immediately to the east of RecycleWorks.<sup>2</sup> Using three scenarios for tonnage throughputs (500, 1,000, and 50,000 tons per year) that were first identified in the City of Pueblo’s grant application, the project team analyzed feedstock accumulation rates against given space constraints and evaluated general equipment needs to process materials.

At a minimum, managing slash feedstocks on site would require a loader, excavator, or bulldozer. Grinding material on site can be done with City-owned equipment or can be contracted. Due to large upfront costs for grinding equipment, ranging between \$300,000 to \$900,000, the project team recommends piloting the slash/mulch program for one to two years utilizing an on-demand grinding contractor.

<sup>2</sup> Pueblo County Public Health staff identified this lot as a possible processing location during the tour and this location was also used in the City’s 2022 Letter of Intent (LOI) for FRWD RFA #ZW030422.



## Recommendations for RecycleWorks

The following recommendations are a result of the TASP project team’s research activities, including site tours, system evaluation sub-activities, and slash/mulch analysis. Recommendations are grouped into categories such as overall, short-term, material-specific, household hazardous waste (HHW) program, and slash/mulch. A summary of recommendations is presented below, and the full listing is included in Section 5 of this report.

<b>OVERALL RECOMMENDATIONS</b>	
<b>Shift Focus to Align with EPR</b>	With the new Producer Responsibility on the horizon in Colorado, Pueblo RecycleWorks should prepare to shift its focus to materials not covered by the new statewide recycling program. (See Extended Producer Responsibility Considerations on page 25 for more information.)
<b>Improved City and County Coordination</b>	Entities involved in recycling across the City of Pueblo and Pueblo County should convene regularly to discuss recycling programs, challenges, partnerships, and opportunities for greater collaboration.
<b>Expanded Footprint</b>	The City of Pueblo should consider options for deconstructing or demolishing the dog kennel structure located at the center of the current site and constructing a building or shelter that can support recycling activities. Public Works staff should also formalize the ability to utilize City-owned properties to the east and west of RecycleWorks. Use of either parcel could open doors to long-term program options such as composting.
<b>SHORT TERM RECOMMENDATIONS</b>	
<b>RREO Rebate</b>	The City of Pueblo should submit an RREO Recycling Rebate application for materials collected in 2023. The rebate can help offset site costs.
<b>Registration with CDPHE</b>	Pueblo RecycleWorks should register with the Colorado Department of Public Health and Environment (CDPHE) as a registered recycler under Section 8.3 of the Department’s Hazardous Materials and Waste Management regulations. This includes annual data reporting to help track statewide waste diversion progress.
<b>MATERIAL SPECIFIC RECOMMENDATIONS</b>	
<b>Bulky Items and Mattresses</b>	To reduce staff processing time and to recover additional commodities, the City of Pueblo should consider partnering with a contractor that can collect, process, and recycle components from mattresses and other bulky furniture items such as couches and sofas.
<b>Glass</b>	RecycleWorks should continue to pilot and prioritize the new collection and hauling partnership with Glass to Glass.

<b>Add New Recyclable Materials</b>	Additional materials poised for collection at RecycleWorks could include expanded polystyrene (commonly known as Styrofoam™), bulky rigid plastics, scrap metal (beyond what is brought in as ‘Large Items’), limited quantity of the most common ( <i>and recyclable</i> ) HHW materials such as motor oil, antifreeze, and cooking oil.
<b>Rigid Plastic Containers</b>	The TASP project team has identified three possible pathways for eventually bringing plastic #1 and #2 collection back to Pueblo RecycleWorks. The recommended option is to work with Design for Recycle (formerly Roots Recycling) and other partners to bring operational capacity back to Design for Recycle for these materials.
<b>Brush and Slash</b>	RecycleWorks should develop a pilot collection program for collecting slash materials (branches/brush) and contract with a third-party grinding service for mulch processing.
<b>HOUSEHOLD HAZARDOUS WASTE (HHW) OPTIONS</b>	
<b>Promote Existing EPR for Paint</b>	Pueblo County Public Health and City partners should do more to promote free and existing options for managing paint, primers, stains, sealers, and clear coatings such as shellac and varnish.
<b>Private / Public Partners</b>	For all remaining HHW materials, Pueblo should continue to pursue options for a private HHW processing partner to collect materials from a centralized collection point or to provide appointment-based curbside collection services.
<b>ONLINE SYSTEM IMPROVEMENTS AND MARKETING</b>	
<b>City / County Collaboration for Vouchers</b>	The City and the County should work together to add Pueblo County addresses to the parcel data included in the new online program and to establish a per unit cost sharing amount for the County to provide to the City to cover the handling costs associated with collecting additional items from Pueblo County residents.
<b>Online Accounts</b>	There are outdated and conflicting web resources and accounts. The City of Pueblo and program partners should clean up online accounts associated with Pueblo RecycleWorks to better promote the drop-off and reduce confusion. Staff should build a unified online presence for RecycleWorks by leveraging the various RecycleWorks, City of Pueblo, Pueblo County, and Pueblo County Public Health accounts.
<b>Update Materials</b>	Outdated materials, such as the Recycle Guide <sup>3</sup> included on the RecycleWorks website should be removed and replaced with updated content.
<b>Online Recycling Directory</b>	The City of Pueblo and the Pueblo County Public Health should consider procuring an easy-to-update online recycling directory tool similar to those utilized by peer communities.

<sup>3</sup> Pueblo RecycleWorks Recycle Guide: <https://www.pueblo.us/DocumentCenter/View/20920/Recycle-Guide-List>

<b>Add Bilingual Resources</b>	RecycleWorks flyers and brochures should be offered in English and Spanish and include clear language and images.
--------------------------------	---

## Future Funding Needs and Guidance

Pueblo County Public Health, Pueblo County, and City of Pueblo partners should continue to monitor for grant funding opportunities that can support Pueblo RecycleWorks’ site improvement efforts, infrastructure for recycling activities, and HHW program capacity. These opportunities may come from multiple funding sources.

Potential upcoming funding request could include:

- Equipment and contracted services to implement a pilot slash/mulch program at RecycleWorks. A follow-up request could be made at the end of the pilot period to request equipment for ongoing implementation.
- Equipment for collecting and containing new materials streams at RecycleWorks, such as expanded polystyrene, motor oil, antifreeze, cooking oil and/or other materials.
- A container for storing mattresses for pick-up if the City of Pueblo chooses to contract with a service provider.
- Contractual agreements for site improvements.

The City of Pueblo and recycling partners should consider the following when applying for grants:

- Allow ample time to develop grant application materials such as work plans, budgets, and to compile vendor quotes.
- Gather letters of support or engagement from project partners. Likewise, provide letters of support or engagement to other projects that support regional infrastructure that provides benefit to Pueblo RecycleWorks.
- If personnel services are requested as part of a grant award, clearly indicate how the project can be sustained long-term after the grant funding is gone.

## Section 2: Facility Tours

This section provides an overview of facility tour findings and key takeaways.

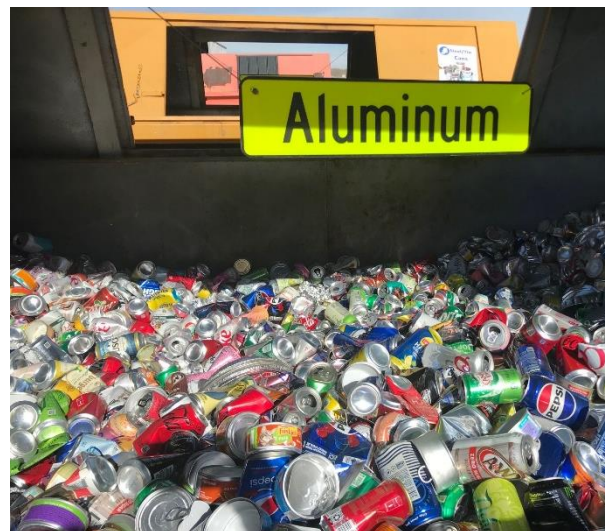
On Thursday, January 11, 2024, the TASP project team visited the Pueblo RecycleWorks, Roots Recycling, Driven Plastics, and the Pueblo Department of Public Works. The tour included observations of the RecycleWorks recycling drop-off operation (before and after the site opened), Roots Recycling’s operations, the production processes at Driven Plastics, and the voucher request process at the Pueblo Department of Public Works office. The tours were coordinated by TASP and attended by a combination of Pueblo Department of Public Health, Pueblo County, City of Pueblo, Driven Plastics, and CDPHE staff as well as the TASP project team

<p><b>Stop 1:</b> Pueblo RecycleWorks 1595 Stockyard Rd Pueblo, CO 81001</p>	<p><b>Stop 2:</b> Roots Recycling 20 Environmental Pl Pueblo, CO 81004</p>	<p><b>Stop 3:</b> Driven Plastics 1107 S Santa Fe Ave Pueblo, CO 81006</p>	<p><b>Stop 4:</b> Pueblo Public Works 211 E D St Pueblo, CO 81003</p>
--	--	--	---

### Stop 1: Pueblo RecycleWorks

#### Tour Summary

RecycleWorks was the first stop on the TASP project team’s tour. The team arrived at 11 a.m. and met with staff to discuss the facility operations prior to the site opening to the public. The project team discussed the site, traffic flow, general operations, materials accepted, equipment, hauling, challenges, and opportunities. Once the site opened to the public at noon, the project team observed site traffic through the facility.



#### Facility Summary

Pueblo RecycleWorks is a public recycling drop-off managed and staffed by the City of Pueblo Department of Public Works. The site opened in 2018 and received its initial funding from CDPHE’s Recycling Resources Economic Opportunity (RREO). The drop-off accepts source-separated recyclables from residents of the City of Pueblo and Pueblo County at no charge. The site also collects several additional items, such as large items (mattresses, furniture, appliances), and tires, through a fee-based voucher system. Large items and tire vouchers are not sold on-site. City of Pueblo residents may purchase vouchers in advance at the



Department of Public Works permit office. Vouchers are only available to City of Pueblo residents.

## Current Operations

Pueblo RecycleWorks is open four days per week. Operating hours are 12:00 p.m. to 4:45 p.m. on Thursdays and Fridays, and 10 a.m. to 1:45 p.m. on Saturdays and Sundays, for a total of 18 hours per week. The site is operated by two full-time and one part-time staff. Most recyclable materials collected on-site are transported to Roots Recycling by a third-party contracted waste hauler, Waste Connections. Upon arrival at Roots Recycling, recyclables are hand-sorted, baled, and prepared for transport to end markets. Other materials are delivered directly to processors, such as scrap metal (to Dionisio Metal & Iron in Pueblo) and glass (to Glass to Glass in Denver). RecycleWorks sees approximately 20,000 visitors per year.

## Materials Accepted

The following materials outlined in Table 1 are accepted at Pueblo RecycleWorks.

**Table 1: Recyclable Materials Accepted at Pueblo RecycleWorks**

MATERIAL	COLLECTION CONTAINER	DESTINATION
Aluminum	Gable-Top Roll-off	Dionisio Metal & Iron
Cardboard	Compactor	Roots Recycling
Glass <sup>4</sup>	N/A	Crushed on Site
Office Paper	Gable-Top Roll-off	Roots Recycling
Low Grade Mixed Paper	Gable-Top Roll-off	Roots Recycling
Mattress Metal	Rolloff	Dionisio Metal & Iron
Plastic #1	Gable-Top Roll-off	Roots Recycling
Plastic #2	Gable-Top Roll-off	Roots Recycling
Plastic Film <sup>5</sup>	Custom Box	Driven Plastics
Steel / Tin	Gable-Top Roll-off	Roots Recycling
Trees	N/A	Mulched on Site by Vendor

Descriptions of the accepted materials are as follows:

- **Aluminum** - soda and beer cans, most cat food cans
- **Cardboard** - flattened corrugated cardboard and paperboard
- **Glass** - food and drink bottles and jars
- **Office Paper** - copier/printer paper, white junk mail, envelopes/mail, lined school paper, shredded white paper (must be contained in paper bag)
- **Low Grade Mixed Paper** - magazines, newspapers, wrapping paper (no glitter or foil), paper bags, greeting cards, phone books
- **Mattress Metal** - includes metal removed from mattresses and box springs, as well as appliances (voucher required for large items such as mattresses).
- **Plastic #1** - water bottles, soda bottles, salad dressing containers

<sup>4</sup> As of 2024, glass is now collected in an open-top roll-off and hauled directly to Glass to Glass.

<sup>5</sup> The Driven Plastics collection box was added to the site in early 2024. No 2023 tonnage data is available.

- **Plastic #2** - milk jugs, detergent bottles, shampoo bottles
- **Plastic Film (LDPE and HDPE)** - plastic grocery bags, plastic bubble mailers
- **Steel / Tin** - soup and food cans
- **Trees** - Christmas trees (accepted seasonally)

The following are accepted with a pre-paid voucher:

- **Tires** - passenger tires
- **Large Items** - Couch/sofas, loveseats, mattresses, box springs, recliners, desks, cabinets, non-Freon-containing appliances, other

### Equipment and Structures Located On-Site

- Entrance shed (near site entrance)
- Open-air, metal roof structure (provides cover for the cardboard compactor)
- Cardboard compactor
- Glass crusher

### Vouchers

To increase waste diversion and reduce illegal dumping in the community, Pueblo RecycleWorks accepts tires and large items through a fee-based voucher system. City of Pueblo residents are permitted to purchase up to four large items vouchers and seven tire vouchers per year<sup>6</sup>. This service offering is limited to City of Pueblo residents only and City of Pueblo staff verify city residency status at the Pueblo Department of Public Works office prior to issuing vouchers. A total of 1,363 vouchers were redeemed in 2023. Table 2 below summarizes the RecycleWorks voucher program. RecycleWorks staff manually process and remove metal from mattresses, boxsprings, and other furniture and this metal is collected for scrap metal recycling.

**Table 2: RecycleWorks Voucher System Summary**

VOUCHER TYPE	DESCRIPTION	VOUCHER PRICE	# OF VOUCHERS PER RESIDENT <sup>7</sup> PER YEAR	DESTINATION
Large Item	Chairs, sofas, mattresses, box springs, appliances, desks, cabinets, etc.	\$10	4	Scrap metal is removed and taken to Dionisio Metal & Iron and remaining material is landfilled.
Tire	Vehicle tires, removed from wheel	\$1	7	GeoCycle

<sup>6</sup> In early 2024, this was updated to eight large items and nine tires per year.

<sup>7</sup> Vouchers are only available to City of Pueblo residents.

## Stop 2: Roots Recycling

### Tour Summary

Roots Recycling was the second stop on the January 11<sup>th</sup> tour. The TASP project team and several Pueblo program staff toured the facility's tipping floor and discussed the facility's operation with the Roots Recycling owner. During the tour and discussion, Roots shared that the facility is currently behind on processing plastic material and looking at options to stop the incoming flow of material until they catch up. Increased holiday materials, staffing challenges, and baling inefficiency were cited as the factors contributing to this situation<sup>8</sup>.

### Current Operations

Roots Recycling operates a Pueblo area recycling collection service as well as a hand-sort recycling processing facility. Their processing facility and operational base is located five miles south of RecycleWorks, at 20 Environmental Pl, Pueblo, CO 81004. Roots services approximately 1,800 residential and commercial customers with dual- or tri-stream collection. Large reusable bags are provided to customers - one for plastic and paper, and one for glass and metal, and in some cases, bundled cardboard is collected separately. Incoming materials are processed, baled, and sent along to end markets or additional processors. Some materials are loosely baled and transported to the Republic Services ('Bestway') MRF in Colorado Springs. Roots Recycling currently receives, processes and markets paper and plastic materials from Pueblo RecycleWorks. Divided across collection, processing, and administration, Roots employs 10-12 people.

## Stop 3: Driven Plastic

### Tour Summary

The Driven Plastics facility was the third stop on the January 11<sup>th</sup> tour. The TASP project team and a handful of Pueblo program staff toured Driven Plastic's operations facility, located at 1107 S Santa Fe Ave Suite A, Pueblo, CO 81006, with Driven Plastic's Chief Operations Manager. The production facility included a material receiving area (where 800 pounds of plastic film from a Pueblo County food pantry system was currently staged), a shredder, and a mixing/prepping/storage area. Driven Plastics recently installed a small custom-built collection box at RecycleWorks and is now processing LDPE and HDPE plastic films from RecycleWorks.

### Current Operations

Driven Plastic is an asphalt additive company that aggregates and processes LDPE and HDPE films into a format that can be integrated into hot-mix asphalt paving processes. A quarter mile stretch of Stockyard Road in front of the RecycleWorks facility was paved using 4,000

---

<sup>8</sup> Roots Recycling staff indicated that an upgraded horizontal closed-end baler would better meet their needs for plastics.

pounds of plastic film and the company has integrated its product into other paving projects around Pueblo. Driven Plastics has developed a patented shredder that turns film into flake and then utilizes a ‘combiner’ chemical from Dow that enables the plastic to combine chemically with the asphalt.

## Stop 4: City of Pueblo Department of Public Works - Voucher Desk

### Tour Summary

The Pueblo Department of Public Works voucher desk, located at 211 E D St, Pueblo, CO 81003, was the fourth and final stop on the facility tour. The TASP project team and Pueblo Department of Public Health staff visited with Pueblo Public Works Director and the Office Administrator. Staff outlined the process for obtaining RecycleWorks vouchers and discussed that the City is working on digitizing the process and making permits available online.

### Current Operations

The Pueblo Department of Public Works, located at 211 E D St, Pueblo, CO 81003, administers the large item and tire voucher process for RecycleWorks. City of Pueblo residents must visit the voucher office during hours of operation (M-F, 8:00 a.m. to 4:30 p.m.) to purchase vouchers. Vouchers can be used at Pueblo RecycleWorks during the drop-off’s operating hours, or Thursday and Friday from 12:00 p.m. to 4:45 p.m. and Saturday and Sunday from 10:00 a.m. to 1:45 p.m. Each large item voucher is \$10 and each tire voucher is \$1.

### Key Findings

Several key findings from the all-day site tours include:

- RecycleWorks customers are dedicated to recycling. The site was busy upon opening, despite strong wind and 30-degree temperatures.
- There is limited shelter on site for staff and for equipment and materials.
- Recyclable materials streams observed on site appeared to be very clean and the new arrangements to collect plastic film and to collect glass in a roll-off for transport to Glass to Glass were both going very well.
- Roots Recycling is experiencing operational challenges with sorting and baling plastic containers from RecycleWorks and other sources. According to Roots staff, this could result in a short-term pause in services. Grant funding for a new baler was identified as a possible solution to the current challenges.
- Requiring residents to visit the Pueblo Public Works permit office in-person is a significant barrier to accessing the large item and tire vouchers. Despite RecycleWorks having both weekday and weekend hours, the Public Works office is only open during regular business hours, Monday through Friday from 8 a.m. to 4:30 p.m. City staff is actively working on a plan to bring this process online.

## Section 3: System Evaluation

The following section provides an overview and evaluation of the Pueblo RecycleWorks facility and surrounding recycling system. The information gleaned in this System Evaluation informs the final recommendations developed by the TASP project team.

### RecycleWorks Summary

Pueblo RecycleWorks is a public recycling drop-off facility that's owned, managed, and staffed by the City of Pueblo Department of Public Works. The site opened in 2018 and received its initial capital funding from CDPHE's Recycling Resources Economic Opportunity (RREO) grant program. The drop-off facility accepts source-separated recyclables, such as paper, cardboard, plastic, and metal, from residents of the City of Pueblo and Pueblo County at no charge. The site also accepts several additional items, such as large items (mattresses, furniture, appliances) and tires, through a fee-based voucher program. The voucher program is currently only available to City of Pueblo residents.

Pueblo RecycleWorks is open four days of the week, for a total of 18 hours each week. Operating hours are 12:00 p.m. to 4:45 p.m. on Thursdays and Fridays, and 10 a.m. to 1:45 p.m. on Saturdays and Sundays. The site is operated by one full-time and two part-time staff.

In addition to City of Pueblo staff, several key partners are involved in RecycleWorks' operations and marketing. Pueblo County Public Health staff promote the RecycleWorks site through marketing and includes the site in their annual Recycling Guide available to all County residents. Waste Connections is the contracted hauling partner and its subcontractor, Design for Recycle (formerly Roots Recycling) processes several of the materials collected (paper, cardboard, plastic). Some recyclables collected at RecycleWorks are provided directly to other partners such as Dionisio Metal & Iron (a metal recycler based out of Pueblo) and Glass to Glass (a secondary glass processor based out of Denver). In 2023, Pueblo RecycleWorks diverted a total of 511 tons of glass, plastic, metal, and fiber.

Figure 1, below, provides an overview of the site flow and layout. Residents enter the site at the southeast corner of the facility and make their way around the U-shaped site in a counterclockwise direction. The site's exit is near the southwest corner of the site. The large structure in the center of the site is a dilapidated dog kennel facility that is no longer utilized by the City. This structure takes up nearly 0.3 acres of the 1.3-acre site and takes up space that could otherwise be used for expanded recycling functions.



**Figure 1: Map of Pueblo RecycleWorks Site Layout**



## Annual Tonnage Data & Site Usage

Pueblo RecycleWorks received 20,895 vehicle visitors in 2023 averaging 402 cars per week, roughly 100 cars per day, and an average of 20-25 cars each hour.<sup>9</sup> In total, the site collected and diverted 511 tons of glass, plastic, metal, and fiber in 2023. Table 3, below, includes the breakdown of the individual tonnage for each commodity, the container(s) used to collect the material, and the ultimate destination for processing or end use. Design for Recycle<sup>10</sup> (formerly Roots Recycling) processed the plastic, paper, and cardboard and these materials were hand sorted and then baled for transport to secondary processors or end markets. Dionisio Metal & Iron processed the aluminum and steel/tin, glass was crushed on site,<sup>11</sup> and the Christmas trees (collected seasonally) were mulched on site using a tree service contractor.

<sup>9</sup> The site is currently operating four days per week, so the weekly average car count is divided across four operating days.

<sup>10</sup> Design for Recycle's landing page: <https://www.design4recycle.com/>

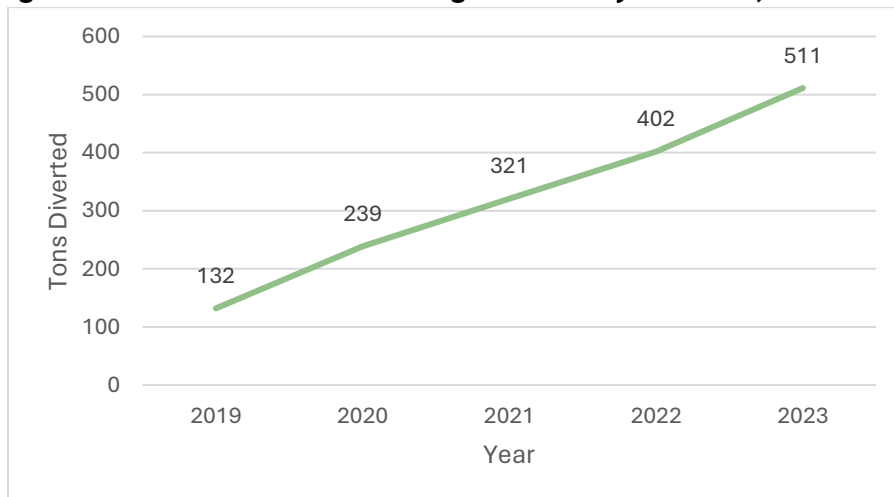
<sup>11</sup> As of 2024, glass is now collected in an open-top roll-off and sent to Glass to Glass in Denver.

**Table 3: 2023 Annual Diversion Tonnage for Pueblo RecycleWorks**

MATERIAL	ANNUAL 2023 TONNAGE OR QUANTITY	COLLECTION CONTAINER	DESTINATION
Aluminum	(Included in steel/tin)	Gable-Top Roll-off	Dionisio Metal & Iron
Cardboard	150.6 Tons	Compactor	Roots Recycling
Glass	27.4 Tons	Roll-off	Pulverized On Site
Office Paper	17.5 Tons	Gable-Top Roll-off	Roots Recycling
Low Grade Mixed Paper	57.4 Tons	Gable-Top Roll-off	Roots Recycling
Mattress Metal	145.8 Tons	Open Roll-off	Dionisio Metal & Iron
Plastic #1	48.5 Tons	Gable-Top Roll-off	Roots Recycling
Plastic #2	(Included in Plastics #1)	Gable-Top Roll-off	Roots Recycling
Steel / Tin	91 Tons	Gable-Top Roll-off	Roots Recycling
Christmas Trees	157 Count	Pile	Mulched On Site by Vendor

Since it was established in 2018, Pueblo RecycleWorks has continued to increase its diversion tonnage year over year. Figure 2, below, depicts the upward trend of diverted materials from 2019 to 2023. The tons of material diverted has grown approximately 40% per year, on average.

**Figure 2: Annual Diversion Tonnage from RecycleWorks, 2019-2023**



### Key Takeaway(s):

- RecycleWorks continues to see steady growth in material diversion.
- When averaged across the year, traffic through the site averages between 20 and 25 cars per hour or a car every 2 to 3 minutes.

## Large Item and Tire Voucher Program

The City of Pueblo's large item and tire voucher program is driven by waste diversion *and* the desire to reduce illegal dumping. The goal is to make recycling these items as accessible as possible and more convenient than landfilling. To participate in the program, City of Pueblo residents must purchase vouchers for each large bulky item (such as a mattress, couch, non-freon-containing appliances, etc.) and each tire they wish to drop off at RecycleWorks. Prior to March 2024, all vouchers were obtained from the Pueblo Department of Public Works voucher office, located at 211 E D St, Pueblo, CO 81003. City of Pueblo residents were required to visit the voucher office in-person during hours of operation (M-F, 8:00 a.m. to 4:30 p.m.) to purchase vouchers and then required to visit RecycleWorks during regular operating hours to present the voucher and drop off the item(s). As of March 2024, the voucher request program was digitized, enabling vouchers to be purchased online using the City's OpenGov platform.<sup>12</sup> The new online platform requires a resident to provide basic contact information to create an account, enter a parcel address verified in the City's address database, enter the number of vouchers for purchase (for both large item and/or tire), provide proof of residence or ownership (by providing utility bill, driver's license, or property card from County Assessor's Office), and provide electronic payment. City of Pueblo residents may still purchase vouchers at the Public Works voucher office using cash or card and the city will continue to accept paper vouchers that were issued prior to digitization.

Each City resident is limited to eight large item vouchers (\$10 per voucher) and nine tire vouchers (\$1 per voucher) each year.<sup>13</sup> Table 4, below, summarizes the total voucher usage and associated fees.

---

<sup>12</sup> OpenGov system can be accessed at <https://puebloco.portal.opengov.com/categories/1109/record-types/6466>

<sup>13</sup> Prior to 2024, the annual maximum for large items was 4 and the maximum number of tire vouchers was 7.

**Table 4: 2023 RecycleWorks Large Item and Tire Voucher Usage Data**

	Daily (Average) <sup>14</sup>	Weekly (Average)	Total	Voucher Price	Cost Offset by Vouchers
Large Items	10	24	1,233	\$10	\$12,330
Tires	4	15	789	\$1	\$789
Total Vouchers Redeemed on Site	10	39	2,031	N/A	\$13,119
Total Vouchers Sold	N/A	N/A	2,151	N/A	N/A

In 2023, RecycleWorks accepted a total of 1,233 large items and a total of 789 tires, equating to an average of 10 large items and four tires per operating day.

The tires accepted on site are stored in a portable trailer and eventually transported to a processor in Colorado Springs. Metal appliances are segregated with scrap metal, and certain large items such as mattresses and couches are partially deconstructed by RecycleWorks staff to remove metal components that can be added to the scrap metal container. Non-recyclable components such as treated wood and foam are placed in a trash roll-off for landfill disposal.

Currently, the voucher program at RecycleWorks is only available to City of Pueblo residents and not available to residents of Pueblo County that reside outside of city limits. City of Pueblo staff was supportive of expanding the program to Pueblo County residents and did not think that the change would require significant programmatic restructuring. Since roughly two thirds of the County’s population resides in the City of Pueblo (112,368 compared to 169,622), the additional influx of usage from Pueblo County residents is not anticipated to strain staff or processing capacity. However, bringing Pueblo County residents into the system will require the City to work with County staff to add Pueblo County addresses to the parcel data included in the new online program and to establish a per unit cost sharing amount for the County to provide to the City to cover the handling costs associated with collecting additional items from Pueblo County residents.

**Key Takeaway(s):**

- Staff processing of large items is time consuming and results in non-recyclable outputs, such as fluff, foam, and wood.
- Processing large items on site for the removal of scrap metal does qualify RecycleWorks as a ‘processor’ of recycled materials and requires the site to register with CDPHE as an 8.3 material recovery facility within the state’s Hazardous Materials and Waste Management regulations.

<sup>14</sup> RecycleWorks was open four days per week in 2023. The daily average is calculated by dividing the weekly average by four.

- The migration of the voucher request program to an online platform increases the accessibility of the program and removes the requirement of visiting the Public Works voucher office in-person and during hours of operation prior to dropping a large item at RecycleWorks.
- There is the potential to open the voucher program to Pueblo County residents. The online platform and underlying GIS address database could support it. City and County staff would need to determine a tracking protocol, a budget sharing/transfer procedure, and ensure the increased uptake is operationally feasible.

## Past CDPHE Grant Applications

The City of Pueblo and other entities in Pueblo such as Pueblo County and Pueblo Regional Council of Governments (PRCOG) have applied for several CDPHE recycling grants between 2017 and 2024. Table 5, below, provides a summary of previous grant applications and the award status associated with each application.

**Table 5: CDPHE Recycling Grants - Pueblo Area Applications, 2017-2024**

YEAR	GRANT	APPLICANT	STATUS	GRANT TITLE
2017	RREO FY17	PRCOG	Awarded	Regional Study: Pueblo County Solid Waste Study
2018	RREO FY18	City of Pueblo	Awarded	Public Recycling Drop-Off Site
2022	FRWD ZW030422	City of Pueblo	Not Awarded	Pueblo RecycleWorks - Increasing Community Access, Expanding Diversion Capacity, and Improving Public Outreach
2022	FRWD BF083122	City of Pueblo	Not Awarded	Expansion of RecycleWorks to Include HHW
2024	FRWD SF011224	Pueblo County	Pending	Pueblo County's Strategic Waste Diversion

### RREO FY17 REGIONAL STUDY: PUEBLO COUNTY SOLID WASTE STUDY

The study included a one season waste characterization study of Pueblo County and an analysis of MRF feasibility. This waste characterization study found that only one third of the waste stream is truly trash and two thirds of Pueblo County's waste was either recyclable or compostable. Over one sixth (16%) of the waste stream consists of cardboard, plastics #1 and #2, and metal.



### **RREO FY18 PUBLIC RECYCLING DROP-OFF SITE**

This grant provided \$289,406 in funding for the establishment of Pueblo RecycleWorks in 2018. The City of Pueblo already owned the land (the site was previously an animal shelter and dog kennel facility) and used grant funding to make upgrades to the site and to procure equipment. Site upgrades included security fencing, cameras, security lighting, and contractual payments for concrete pouring and an electrician. Equipment purchased with the grant included a cardboard compactor, Roll-off containers, a glass crusher, and an equipment cover / roof structure. The grant also covered advertising, educational costs, and a grand opening event.

### **FRWD ZW030422 PUEBLO RECYCLEWORKS - INCREASING COMMUNITY ACCESS, EXPANDING DIVERSION CAPACITY, AND IMPROVING PUBLIC OUTREACH**

In response to FRWD's request for applications (RFA #5), the City of Pueblo submitted a project with goals to increase community access to recycling and increase waste diversion. Four primary objectives included increasing the total operating hours of the RecycleWorks facility, accepting residential organic yard waste, expanding the facility's current cardboard processing capacity, and improving public outreach efforts. The total request was \$1,442,520 with \$994,489 in matching, for a total project budget of \$2,437,009.

Ultimately, this project was not awarded. CDPHE staff categorized this application as incomplete due to an empty workplan, unanswered questions, omission of letters of engagement and support, only one quote and one staff bio despite several pieces of equipment included in the budget and multiple staff described in the narrative. Feedback from the FRWD board included concern over three years of staff (FTE) funding and the sustainability of these positions after the grant period, lack of letters of support, ambiguity around whether the yard waste would be composted or mulched, appropriateness of the equipment, and the missing quotes and work plan.

### **FRWD BF083122 EXPANSION OF RECYCLEWORKS TO INCLUDE HHW**

In response to FRWD's request for applications (RFA) #6, the City of Pueblo submitted a letter of intent for a proposed project, *Expansion of RecycleWorks to Include HHW*. The letter of intent summarized the project's aims, which included site improvements at the existing Pueblo RecycleWorks site to host a public, year-round HHW drop-off. The project budget included requests related to building demolition, design and construction of a new building, additional staff, and subsidy to a private site operator. This letter of intent did not make it to the application round. Review feedback included hesitancy around FRWD funds being used for an HHW program, especially when waste diversion metrics were not provided. Additionally, reviewers questioned the amount of HHW that can functionally be diverted, as most is either incinerated or deposited in HHW landfills. Generally, reviewers cited the need for Pueblo to address low hanging fruit, such as traditional recyclables and organics.

## FRWD SF011224 PUEBLO COUNTY'S STRATEGIC WASTE DIVERSION

In response to FRWD's request for applications (RFA) #9, Pueblo County applied with stated goals to increase County waste diversion through the collection of cardboard, paper, plastic, aluminum, plastic film, and glass from Pueblo County facilities. These materials would be collected in multi-stream containers within County facilities and then delivered to three County-owned collection and processing locations: Health and Human Service, Maintenance Shop, and the Pueblo West Roads. At these locations, plastic containers, plastic film, glass and metals would be placed in 12-yard Roll-offs, cardboard would be baled, and paper would be shredded and baled. Most loose and/or baled materials would be transported to Roots Recycling, except for plastic film, which would be transported to Driven Plastics. A later phase of the project would open the County's Pueblo West Roads facility in Pueblo West for public drop-off. Asphalt patching equipment was also requested in this application.

The FRWD board of directors approved this project and authorized CDPHE staff to work with Pueblo County staff to align this project with the findings in this report. Board members expressed some hesitation in funding the asphalt patching equipment, citing that it was not well aligned with the rest of the project. Staff training was also identified as a critical activity for the grant project scope of work.

### Key Takeaway(s):

- City of Pueblo and system partners are actively pursuing waste diversion grants but could use technical support in the development of grant project applications.
- Staff should prioritize time for the development of grant application materials and take ample time to develop a detailed work plan and budget, gather quotes and letters of support or engagement, and clearly summarize the project impact and long-term sustainability beyond the term of the grant.
- Based on feedback from the FRWD board of directors, RecycleWorks upgrades related to HHW may require a grant funding source other than FRWD as FRWD's highest priority is waste diversion tonnage that support aggressive waste diversion goals for the Front Range. While HHW programs do keep toxic and dangerous materials out of landfills, HHW project proposals may not be as competitive as projects that divert larger tonnage from Front Range landfills.
- CDPHE staff should incorporate findings from this TASP analysis of Pueblo RecycleWorks into the Pueblo County's RFA #9 scope of work.

## RREO Recycling Rebate

The CDPHE Recycling Resources Economic Opportunity (RREO) Recycling Rebate Program is designed to assist operators of free public recycling drop-off sites by offering rebates that help to offset a portion of the operational and transportation cost associated with collecting materials and getting them to market or to secondary processors. Local government, nonprofit, and for-profit entities in the state are eligible to apply for this rebate if they incur transportation and/or hauling costs associated with the provision of one for more free public

recycling drop-off. There is no guarantee that the rebate program will provide rebates in any given year, as the program operates only when funding is available. Available funding is distributed among eligible applicants based on several factors and are often weighted to prioritize factors such as the distance to recycling markets or to processors. The rebate application is typically released in April and addresses costs associated with drop-off operations from the previous calendar year.

The City of Pueblo applied for one round of recycling rebates, which was in 2021 for the calendar year 2020. The total amount received by the city during the 2021 RREO Recycling Rebate application was \$6,497. A total of \$970,999.63 was available for statewide recycling rebates in 2021. RecycleWorks has not submitted another RREO Recycling Rebate application.

#### Key Takeaway(s):

- The City of Pueblo should monitor for the RREO Recycling Rebate application in April 2024 and apply to receive a rebate for the 511 tons of materials collected in 2023.

## End Market Contracts

Pueblo RecycleWorks' operations are supported by a hauling and processing contract that enables the material collected on site to be transported to secondary processors and, ultimately, to end markets. The City's most recent RFP was released in 2023 and Waste Connections was awarded the hauling contract. Waste Connections subcontracts with Design for Recycle (formerly Roots Recycling) for processing of recyclable materials collected at RecycleWorks.

The City of Pueblo has separate hauling arrangements with Dionisio Metal & Iron metals and with Glass to Glass for all glass containers.

Any material-specific rebates earned from the end market value of material transported by the contracted hauler or direct hauling arrangement are returned to the City and are placed in the City's general fund.

#### *End Market Interviews*

The project team conducted interviews with several vendors and contacts representing new or expanded end market options for materials currently collected on site, as well as materials that could be collected or processed differently in the future. Table 6 below outlines the interviews conducted.

**Table 6: End Market Interviews**

NAME	MATERIAL	INTERVIEW DATE
Driven Plastics	LDPE and HDPE Film	February 2024
FoamCycle	Expanded Polystyrene (EPS)	February 2024
Urban Recycling Co	Mattresses - Metal & Textile	March 2024
Direct Polymers	Plastic #1 and #2	March 2024
Janus Enterprises	Motor Oil and Antifreeze	March 2024

#### *LDPE and HDPE Films - Interview with Driven Plastics*

As of January 2024, RecycleWorks began collecting low-density polyethylene (LDPE) and high-density polyethylene (HDPE) films in a custom collection container provided by Driven Plastics. The container can capture up to about 40 pounds of material and is emptied by Driven Plastics staff on an as-needed basis (about every other week). Driven Plastics hopes to continue this pilot and expand collection and is looking for ways to make transportation to their facility more efficient. Ideas include utilizing super sac containers or baling materials on site. Plastic films processed by Driven Plastics are incorporated into hot mix asphalt and used in paving projects.

#### *Expanded Polystyrene (EPS) - Interview with FoamCycle*

FoamCycle offers prefabricated foam densification systems that allows drop-off facilities to collect, densify, and prepare ‘ingots’ for transport to end markets by way of Denver-based secondary processor and material aggregator, Direct Polymers. The FoamCycle system is contained in a modified shipping container and can be fully operational within a few days of delivery. The unit does not require a concrete pad, but does require electricity, space for an external collection container, staffing support for loading the densifier, space for storage of 5-6 pallets of densified material and a forklift or pallet jack for managing pallets. Their systems are currently in 30 locations across the country, including SustainAbility in the Denver metro area. Local markets exist for the EPS ingots and prices average \$0.10 to \$0.40 per pound.

#### *Plastic #1 and #2 - Interview with Direct Polymers*

Based out of Denver, Direct Polymers plays several roles in the plastics recycling supply chain as a secondary processor and material consolidator. Direct Polymers purchases a wide range of #1 through #7 plastics and sells quality reground, pulverized, and pelletized products to manufacturers. With respect to #1 and #2 plastics, such as those collected at RecycleWorks, Direct Polymers expressed concern that extremely low commodity prices (such as 20 cents per pound) make the economics of collecting and processing this material challenging, especially when operating costs or transportation costs are high. Direct Polymers also cited that the need for system-level improvements and the addition of local end markets could increase program resilience and incentivize programs and processors to continue collection of plastic materials even during periods of low commodity values.

### *Mattresses - Interview with Urban Recycling Co*

Urban Recycling Company currently operates a mattress recycling operation in the southern Front Range region, recycling between 10,000 and 15,000 mattresses and box springs per year. Mattresses and box springs are disassembled, and the steel, top layer (textile bonded with polyurethane), and polyethylene padding are baled and shipped to domestic end markets. Their facility is in Colorado Springs and the company currently operates collection service (both for individual homes and for bulk sources) to customers in Douglas, El Paso, Pueblo, and Teller counties. The price per mattress or box spring is \$35, transportation and handling fees are additional. Urban Recycling Company is currently experiencing a bottleneck in their ability to expand processing capacity since they do not have high volume shredding capacity. A mattress spring shredder could help solve this issue.

### *Mulch - Online Research Only*

RecycleWorks currently generates a small quantity of mulch from the Christmas trees collected seasonally and there are no challenges with distributing this quantity of mulch from the site. If the City were to add a grinding and mulching operation to RecycleWorks (further explained in Section 4), additional quantities of mulch would require additional end users. Potential end uses of this mulch could include residents, City Public Works or Parks departments, or others. Many Front Range municipalities offer free discounted mulch materials to their residents. The City and County of Denver offers mulch at an annual Mulch Giveaway event each spring and distributed 1,160 cubic yards at its event in 2023. Douglas County allows residents to pick up mulch during regular Saturday operating hours at their slash/mulch drop-off site in Castle Rock and the City of Fort Collins offers free mulch for pick-up at its Timberline Recycling Center, while supplies last. The City of Loveland sells mulch to residents for \$8.50 per cubic yard at its Recycling Center.

### *Motor Oil - Interview with Janus Enterprises*

Janus Enterprises is a locally owned and operated motor oil and antifreeze recycler in southern Colorado. Pueblo RecycleWorks partnered with Janus Enterprises on several occasions to offer one-day motor oil and antifreeze collection events at RecycleWorks during regular business hours, generally on Saturdays. The most recent event was on Saturday, March 23, 2024. Janus expressed interest in continuing this partnership with RecycleWorks.

### **Key Takeaways:**

- There are readily available markets and/or processing options for plastic film, expanded polystyrene, motor oil, antifreeze, and mulch. The City of Pueblo could explore additional grant funding to develop and/or expand the collection of these items at RecycleWorks.
- Utilizing a contracted recycling vendor for mattress and large item recycling could help reduce processing labor demand at RecycleWorks and divert additional



components of these items such as textile bonded polyurethane and polyethylene padding.

## Current Challenges with Plastic #1 and #2

During the site tours conducted on January 11, 2024, the owner of Roots Recycling indicated that they were experiencing challenges related to processing plastic materials (#1 and #2 plastic) collected from RecycleWorks and other customers. They indicated the potential need for temporarily halting the acceptance of these materials soon, citing a general backlog and processing limitation due to staffing levels and inadequate baling equipment. These materials are also experiencing extremely low commodity pricing at this time.

Soon after the tour in January, Roots Recycling notified City of Pueblo staff that they could no longer accept #1 and #2 plastic. City staff promptly removed plastic #1 and #2 from the drop-off program and communicated this to RecycleWorks customers. The project team also learned that Roots Recycling was under new ownership and now called Design to Recycle (as of February 2024). The project team was not able to contact the new owner of Design for Recycle.

Given the challenging backdrop of plastic recycling in Pueblo, the TASP project team has identified a few possible pathways for eventually bringing plastic #1 and #2 collection back to Pueblo RecycleWorks:

1. The City of Pueblo can work with Design for Recycle and support efforts to bring operational capacity back to process this material. Operational efficiency improvements at Design for Recycle could include a new baler for more cost-efficient handling of this material during the commodity market downturn.
2. The City of Pueblo can explore additional hauling arrangements to deliver this material loose to the material recovery facility in Colorado Springs (50 miles, one-way). Prior to shutting down plastic #1 and plastic #2 collection, RecycleWorks was accumulating a full roll-off of PET each week and a roll-off of HDPE about every two weeks, so this option would mean one or two trips per week to Colorado Springs.
3. The City of Pueblo can explore investing in baling equipment at Pueblo RecycleWorks and arranging transport of full loads of baled plastic #1 and plastic #2 directly to end markets.

If RecycleWorks intends to explore adding baling capability at RecycleWorks, the following considerations, outlined in Table 7, will need to be assessed:

**Table 7: Key Considerations for Baling Materials at RecycleWorks**

CONSIDERATION	EXPLANATION
Loose Material Storage	Depending on the frequency of baling, additional containers for storing loose, uncompacted materials may be necessary.

Processing Space	The site will need a large, covered location for tipping plastic #1 and #2 roll-off containers and loading materials into the baler. Ideally, this location is indoors and well protected, especially if handling lightweight materials.
Baler Selection	A baler should be selected based on the materials needing to be baled and for the desired specifications of bales.
Baler Location	Ideally, a baler should be located under a cover and indoors. If a baler is outdoors, it needs to be corrosion-resistant and significantly protected from the elements. A baler also needs to be connected to a power supply.
Additional Equipment	Additional equipment, such as a skid steer and pallet jack, are necessary for loading the baler and managing baled materials. A forklift may be required for loading bales into trucks if not provided by a transporter.
Loading Dock	A loading dock (permanent or temporary) would be required for loading pallets into a large transport trailer.
Staff Training	Staff would need to be trained to operate additional equipment (baler, skid-steer and/or forklift).
Staff Time	Processing and baling would take additional staff time.
Bale Storage	End market buyers do not purchase individual bales and instead require full loads (~40,000 pounds or ~20 tons) of a single material. Depending on the material density and bale size, this could mean storing 20 or more bales of material prior to transport. Indoor storage is preferable, but well covered outdoor storage could be viable in certain scenarios. Arranging transportation directly to a mill or end user often requires working with material brokers.
Registration and Reporting	Processing and baling materials for transportation to end markets would require RecycleWorks to register and report annual recycling data to the state under Section 8.3 of the Hazardous Material and Waste Management regulations.

In addition to the three scenarios listed above, a current project under development with the Circular Economy Development Center (CEDC) could alleviate some of the stress in Pueblo’s recycling landscape. As outlined in their presentation to the FRWD board of directors in March 2024, the CEDC is working with several partners and collaborators to develop the existing Front Range Transload (FRT) facility in Pueblo into a regional recycling aggregation hub where materials can be ‘transloaded’ from trucks to rail cars for more efficient, direct-to-mill transportation. This site also has ample indoor storage for staging and organizing material for transport. If the CEDC-supported project at FRT becomes operational, it could help local recycling generators such as Pueblo RecycleWorks and Design for Recycle to move partial loads of material since bales of different material could be loaded onto one truck and delivered to FRT to be sorted prior to shipment to mills (in other words, these facilities would not need to amass 20 tons of one material prior to transporting). In addition to transloading

capacity, this CEDC-proposed project for FRT includes a baler which would provide an alternate or back-up baling option for RecycleWorks' materials, as needed. The existing FRT facility is located near downtown Pueblo within five miles of both Pueblo RecycleWorks and Design for Recycle.

#### Key Takeaway(s):

- There is no immediate solution for the current challenges with recycling plastic containers (#1 and #2). The issues in Pueblo are symptoms of the volatile commodity pricing landscape and exacerbated by Pueblo's geographic isolation from large recycling infrastructure. Investment in efficient baling equipment would provide immediate benefit.
- Solutions for plastic recycling in Pueblo will require collaboration between the City of Pueblo, local recycling processors such as Design for Recycle, secondary processors, the Circular Economy Development Center, and others.

## Extended Producer Responsibility Considerations

In 2022, Colorado passed an extended producer responsibility (EPR) policy for printed paper and packaging. The bill, HB 22-1355, or "Producer Responsibility Program for Statewide Recycling" was signed into law by Governor Polis on June 3, 2022. When fully implemented, the Producer Responsibility program will create a statewide and producer-funded recycling program for Colorado residents that offers no cost recycling collection 'as convenient as trash collection' across the state. For communities in the Front Range where an estimated 98% of households have access to curbside trash collection, this means that nearly all households will receive curbside single-stream recycling service to include printed paper and packing items identified on the Minimum Recyclables List (MRL) and other collection arrangements for materials included on the Additional Recyclables List (ARL). The cost to implement this statewide recycling program will be covered through the fees paid by producers to the producer responsibility organization (PRO).

Since the law's passage in 2022, the following developments have occurred:

- An Advisory Board was established.
- Circular Action Alliance (CAA) was selected as the Producer Responsibility Organization (PRO).
- CCA commissioned a Colorado Needs Assessment report that was published in January 2024 with revisions made in March 2024. The Colorado Needs Assessment documented the existing recycling programs and infrastructure in the state and modeled costs and diversion implications for three separate scenarios (low, medium, and high) for outcomes expected to be achieved by 2030 and 2035.
  - In the low Scenario, Colorado could achieve a recycling rate between 35%-41% in 2030 and 48%-54% in 2035.
  - In the medium Scenario, Colorado could achieve a recycling rate between 38%-44% in 2030 and 52%-58% in 2035.

- In the high Scenario, Colorado could achieve a recycling rate between 39%-45% in 2030 and 54% - 60% in 2035.

Upcoming Producer Responsibility program milestones include:

- The Joint Budget Committee (JBC) of the state’s General Assembly will vote to select one of the three scenarios outlined in the Colorado Needs Assessment report.
- Using the scenario selected by the JBC, the PRO will create a Program Plan outlining how additional services will be provided to meet the diversion threshold indicated in the scenario.
- The PRO will begin implementing the Program Plan within six months of its approval. Implementation is estimated to begin in 2026.

Just like other communities across Colorado, Pueblo will benefit from the Producer Responsibility program in that its residents will receive curbside recycling service at no direct cost to them. As a result, it is anticipated that Pueblo residents will have less of a need for recycling drop-off services for materials included on the Minimum Recyclables List and the Additional Recyclables List.

Table 8, below, compares the general material categories accepted at RecycleWorks with the collection methods indicated for various material types under the Producer Responsibility program.

**Table 8: Materials Currently Collected at RecycleWorks & EPR Collection Methods**

<b>MATERIAL CURRENTLY COLLECTED AT PUEBLO RECYCLEWORKS</b>	<b>COLLECTION METHOD INDICATED IN PRODUCER RESPONSIBILITY PROGRAM</b>
Aluminum	Minimum Recyclables List - Curbside
Cardboard	Minimum Recyclables List - Curbside
Glass	Minimum Recyclables List - Curbside or Drop-Off
Large Items	Not Included
Office Paper	Minimum Recyclables List - Curbside
Mixed Paper	Minimum Recyclables List - Curbside
Mattress Metal	Not Included
Plastic #1	Minimum Recyclables List - Curbside or Drop-Off Additional Recyclables List - Curbside, Drop-Off or Other
Plastic #2	Minimum Recyclables List - Curbside or Drop-Off Additional Recyclables List - Curbside, Drop-Off or Other
Plastic Film	Additional Recyclables List - Curbside, Drop-Off or Other
Steel/Tin	Minimum Recyclables List - Curbside or Drop-Off Additional Recyclables List - Curbside, Drop-Off or Other
Tires	Not Included
Trees (seasonal, Christmas trees)	Not Included

As summarized above, just four material types currently accepted at RecycleWorks (large items, mattresses, tires, and Christmas trees) are *not* included in either the Minimum Recyclables List or the Additional Recyclables List. To continue to serve the residents of Pueblo after the Producer Responsibility program is implemented, the City of Pueblo should consider expanding the scope of materials collected. Even though Producer Responsibility will not begin implementation until 2026, this is a good time to adjust the focus of future site investments.

Many communities that offer recycling drop-offs already accept a wide range of materials not included in curbside recycling programs. Table 9, below, includes an assortment of ‘hard-to-recycle’ and HHW materials found in other Front Range recycling drop-off programs.

**Table 9: Additional Materials Accepted at Front Range Recycling Drop-Offs**

MATERIALS ACCEPTED AT OTHER FRONT RANGE RECYCLING DROP-OFFS		
Antifreeze	Batteries	Books
Bulky Rigid Plastics	Cartons	Clothing / Shoes
Cooking Oil	Electronic	Expanded Polystyrene (EPS)
Fire Extinguishers	Food Scraps	Motor Oil
Scrap Metal	Yard Debris	Other

**Key Takeaway(s):**

- As Colorado’s new Producer Responsibility program is anticipated to bring no-cost curbside single-stream recycling service to residents of the City of Pueblo and Pueblo County beginning as early as 2026 (subject to the program’s final program implementation schedule), the Pueblo RecycleWorks site should begin to shift its focus to organics and more hard-to-recycle materials not covered through the Producer Responsibility program.

## Household Hazardous Waste (HHW) Program Analysis

The US EPA generally defines household hazardous waste (HHW) as leftover household products that can catch fire, react, or explode under certain circumstances, or that are corrosive or toxic. These products often include paints, cleaners, oils, batteries, and pesticides.

The City of Pueblo and Pueblo County Public Health do not offer permanent HHW programming to help residents manage these materials. Pueblo County Public Health’s website includes drop-off options in its annual Recycling Guide and provides other general resources and pointers, but there are no ongoing HHW services for City of Pueblo or Pueblo County residents provided by the city or county. With funding provided through the Supplemental Environmental Project (SEP) program, Pueblo County Public Health has offered periodic HHW collection events, with the most recent event occurring in October 2022. This most recent event served approximately 300 residents and collected enough HHW to fill one

53’ trailer and three box trucks. This material was handled by a third-party contractor and the material processing fees for the event were \$41,000.

The City of Pueblo and Pueblo County Public Health have made several attempts to secure grant funding for HHW infrastructure at the RecycleWorks facility, but no grant awards have been secured to date. The City of Pueblo submitted a letter of intent for a 2022 Front Range Waste Diversion (FRWD) grant to make upgrades to the RecycleWorks facility for the acceptance of HHW materials but did not receive an invitation to submit a full application. More recently, Pueblo County Public Health applied to the Supplemental Environmental Program (SEP) program for materials, part-time personnel, and contractual costs associated with installing, staffing, and servicing a 40’x10’ HHW collection container at Pueblo RecycleWorks for three years. At the time of this report, this grant is still under negotiation.

Other Front Range communities offer a variety of HHW services to their residents ranging from HHW collection events (like those hosted by Pueblo County Public Health) to operating dedicated HHW facilities. A summary of HHW service offerings found among Front Range peers and neighbors is included in Table 10 and more detailed program descriptions are included below.

**Table 10: HHW Programs Offered in Front Range Communities**

	POPULATION (2021)	REGULARLY HOSTS HHW COLLECTION EVENTS	OFFERS CURBSIDE HHW COLLECTION SERVICES	COLLECTS SELECT HHW MATERIALS AT EXISTING RECYCLING DROP-OFF	OPERATES A DEDICATED HHW FACILITY	OTHER
City of Pueblo	112,368	-	-	-	-	-
Pueblo County	169,622	✓	-	-	-	-
Adams County	522,140	-	-	-	-	✓
Boulder County	329,543	✓	-	-	✓	-
City and County of Denver	711,463	-	✓	-	-	-
City of Fort Collins	168,538	✓	-	✓	-	-
City Loveland	77,194	-	-	✓	-	-
El Paso County	737,867	✓	-	-	✓	-
Larimer County	362,533	-	-	-	✓	-



Weld County	340,036	-	-	-	✓ 15	-
-------------	---------	---	---	---	------	---

### ADAMS COUNTY

Adams County offers its residents a \$27 voucher once per year to cover the facility fee charged by the private HHW processor located within the county. Residents are responsible for the remainder of the per pound fees associated with their materials.

### BOULDER COUNTY

The Boulder County Household Hazardous Waste facility was built in 2011 and serves all residents of Boulder County and the City and County of Broomfield. Each community pays for the participation of its residents and Boulder County pays for the participation of residents within smaller communities and unincorporated areas. Visitors from outside Boulder County are charged a fee of \$45.00 per visit. There is a 400-pound limit per day and anything over 400 pounds is charged additional fees. The site collects common household hazardous waste products including items such as fluorescent bulbs and tubes, home cleaning products, home maintenance products, motor oil and antifreeze, paint, and yard and garden care products. The facility also includes a free reuse area where customers can shop for reusable products.

### CITY AND COUNTY OF DENVER

The City and County of Denver offers its residents a curbside HHW collection program facilitated by a private HHW contractor.<sup>16</sup> A resident must have three different types of HHW materials or a minimum of 25 pounds of one type of material to make an appointment. The resident pays a \$15 copay, and the city pays for the remainder of the service fee (an additional \$112 for a collection appointment or an additional \$107 for a drop-off appointment). Additional materials left out for collection or dropped off by the resident are subject to additional per-pound fees.

### CITY OF FORT COLLINS - TIMBERLINE RECYCLING CENTER

The City of Fort Collins' Timberline Recycling Center has two distinct areas. The Everyday Recycling Yard is free for all residents and open seven days per week. This Everyday Recycling Yard collects source-separated everyday recyclables such as paper, cardboard, metal, plastic, and glass. The Hard-to-Recycle yard is fully staffed and open Tuesday through Saturday. Visitors to the Hard-to-Recycle yard are charged a \$5 entrance fee plus additional fees for select materials. The Hard-to-Recycle yard accepts some HHW materials such as batteries, paint, and motor oil. The site does not accept household chemicals, fertilizers or other HHW materials.

### CITY OF LOVELAND

Similar to the City of Fort Collins, the City of Loveland's Recycling Center accepts everyday recyclables for free and then an assortment of hard-to-recycle and HHW items for a fee.

<sup>15</sup> Weld County operates two HHW facilities.

<sup>16</sup> The same contractor, WM At Your Door, is utilized by several other communities in the Denver metro area such as Arapahoe County, Aurora, Centennial, Douglas County, Englewood, Greenwood Village, Lone Tree, and Westminster. Program copays tend to vary between \$0 and \$20, and appointments are often limited to one per household, per year.

HHW-like materials accepted at the Recycling Center include batteries, motor oil, antifreeze, and electronics. This facility is staffed during operating hours.

**EL PASO COUNTY**

El Paso County has owned and operated a Household Hazardous Waste Facility since 2002. County residents can bring their HHW materials to the facility free of charge, as the facility is funded by the Household Hazardous Waste Fund that collects tip fees at privately owned landfills within the County. Materials accepted at this facility include paint, stains, solvents, lawn and garden chemicals, household chemicals and cleaning supplies, batteries, motor oil, antifreeze, brake and transmission fluids, electronics, medical sharps, and more. El Paso County recently added a ‘very small quantity generator’ (VSQG) program which enables the facility to accept waste from non-household organizations. Fees apply and appointments are required for all VSQG customers (Wednesday appointments only). Out-of-county materials are accepted on a fee-for-service basis.

**LARIMER COUNTY**

Larimer County operates a Household Hazardous Waste facility for Larimer County residents free of charge. The facility also serves businesses, churches, landlords, local governments, and non-profits through a business program (fees apply). Materials accepted include paint, lawn chemicals, automotive fluids, batteries, cleaners, and other items. There is a 30-gallon maximum per visit and the maximum containers size for any material is five gallons. The facility also offers a Drop N’ Shop where residents can take home previously owned products free of charge.

**WELD COUNTY**

Weld County residents can dispose of household hazardous materials for free at one of two facilities operated by the county. One site is in Greeley and the other is in Dacano. There is a 200-pound limit for each drop-off and containers must not exceed five gallons. Businesses can use the site, but fees apply. The Greeley location includes a “Drop and Swap” where reusable materials are made available for residents to take for free.

The project team located program cost estimates for several of the program types described above. Table 11, below, summarizes the upfront capital cost, ongoing operational costs, and/or annual contractual costs associated with the Boulder County, City and County of Denver and El Paso County HHW programs.

**Table 11: HHW Program Operating Costs for Dedicated Facilities and Curbside Collection**

COMMUNITY	POPULATION	CAPITAL COST FOR HHW FACILITY	ANNUAL OPERATIONAL COST FOR HHW FACILITY	ANNUAL COST OF HHW CURBSIDE COLLECTION PROGRAM	CUSTOMERS SERVED
Boulder County	329,543	\$2.5 M	\$800,000	N/A	Unknown

City and County of Denver	711,463	N/A	N/A	\$127,456	1,138
El Paso County	737,867	Unknown	\$1,000,000	N/A	20,000

### COLORADO’S PAINTCARE PROGRAM

The Colorado PaintCare program is a product stewardship program that offers drop-off sites throughout Colorado where the public can take leftover and unwanted paint for recycling. Consumers pay an advance disposal fee on all new paint purchases in the state and these fees cover the cost of recycling at the paint’s end of life. The program was established through legislation in 2014 and implemented in 2015. To date, the Colorado program has collected 6.4 million gallons of paint, primers, stains, sealers, and clear coatings such as shellac and varnish. There are currently 208 year-round drop-off sites across the state and four sites located within Pueblo. Pueblo County Public Health’s 2023 Recycling Guide cites three of the four PaintCare drop-off sites. The PaintCare site offers downloadable resources<sup>17</sup> and a process to request printed program materials.

#### Key Takeaway(s):

- There is significant need for HHW recycling in Pueblo, but the City of Pueblo and Pueblo County Public Health lack ongoing funding allocations to provide these services.
- The cost for providing ongoing and regular HHW services to communities can vary greatly. Construction and operation of dedicated HHW facilities is costly (multiple millions required for capital expenses and many hundreds of thousands for annual operations) but can serve many residents. Contractual programs, like Denver’s, can provide broad access to residents but the copay and appointment-based nature of the program keeps participation rates low relative to drop-off programs at dedicated HHW facilities.
- Some recycling drop-offs choose to accept select HHW items at their facilities (motor oil, batteries, etc.), but avoid accepting the full range of HHW materials at these locations. Since RecycleWorks is already offering motor oil and antifreeze collection events with a local vendor, this could be a viable option.
- More can and should be done to promote the no-cost paint recycling drop-off options in Pueblo to help reduce the volume of materials requiring costly HHW collection or processing. At a minimum, RecycleWorks should make brochures and information readily available to RecycleWorks customers and include regular social media posts about paint recycling options.

<sup>17</sup> Colorado PaintCare Brochure: <https://www.paintcare.org/wp-content/uploads/docs/co-brochure.pdf>

## RecycleWorks Program Marketing

There are several different groups involved in the marketing of services provided at Pueblo RecycleWorks. A summary of the activities completed by various groups is included below.

### CITY OF PUEBLO

- Maintains Pueblo RecycleWorks page<sup>18</sup> with general information such as the materials accepted, operating hours, etc. This page links to a PDF Recycle Guide<sup>19</sup> and to the Pueblo Department of Public Health page for the County’s Recycling Guide.<sup>20</sup> The PDF guide linked on this page lists hours that are incorrect for current operations and do not match information included on the website.
- Provides a digital RecycleWorks flyer on the RecycleWorks page and provides printed copies at Department of Public Works voucher office.
- Includes a separate Recycle Guide<sup>21</sup> on the Recycleworks website page that has multiple pieces of outdated information such as the sites operating hours and the materials accepted at the site.
- Maintains City of Pueblo Facebook page<sup>22</sup> (12,000 followers) and then has separate accounts for City of Pueblo Public Works<sup>23</sup> (221 followers) and Pueblo Parks and Recreation (13,000 followers).<sup>24</sup>
- Two other Facebook accounts are connected to Pueblo RecycleWorks. One page was created in 2022 but has no posts.<sup>25</sup> Another page is an ‘Unofficial Page’ and uses the incorrect spelling of the site (Recycleworks vs RecycleWorks).<sup>26</sup> Most of the content on this page includes tagged posts made by other accounts including the City of Pueblo Public Works page and the City of Pueblo Parks and Recreation page.

### PUEBLO COUNTY PUBLIC HEALTH

- Maintains website that contains annual Recycling Guide, Household Hazardous Waste (HHW) information, and a link to the City of Pueblo RecycleWorks page.

---

<sup>18</sup> RecycleWorks website: <https://www.pueblo.us/2255/Pueblo-RecycleWorks>

<sup>19</sup> <https://www.pueblo.us/DocumentCenter/View/20920/Recycle-Guide-List>

<sup>20</sup> City of Pueblo and Pueblo County Recycling Guide:  
<https://county.pueblo.org/sites/default/files/2023-10/RecyclingGuide2023.pdf>

<sup>21</sup> City of Pueblo Recycle Guide List: <https://www.pueblo.us/DocumentCenter/View/20920/Recycle-Guide-List>

<sup>22</sup> City of Pueblo Facebook page: <https://www.facebook.com/CityofPueblo/>

<sup>23</sup> City of Pueblo Public Works Facebook: <https://m.facebook.com/pueblpubworks/>

<sup>24</sup> City of Pueblo Parks and Recreation Facebook: <https://www.facebook.com/puebloparks/>

<sup>25</sup> City of Pueblo - Pueblo RecycleWorks page:  
<https://www.facebook.com/profile.php?id=100079685861180>

<sup>26</sup> Unofficial Pueblo ‘Recycleworks’ page: <https://www.facebook.com/pages/Pueblo-Recycleworks/2399696056923701>

- Maintains Pueblo Department of Public Health Facebook page<sup>27</sup> (13,000 followers) and Instagram account (1,911 followers).<sup>28</sup> This page has featured just four posts in the past year related to RecycleWorks, two of which were related to Christmas trees.

## PUEBLO COUNTY

- Maintains website that contains Pueblo Department of Public Health information.
- Maintains a Facebook page<sup>29</sup> (12,000 followers) that does not have any recent posts related to recycling.

## OTHER

- An unclaimed Yelp page is the third result via online search engine results and includes two negative reviews as well as incorrect hours of operation.
- Key details such as hours of operation and materials accepted for recycling at RecycleWorks are not consistent across all information sources and could lead to customer confusion and frustration.
- Recycling resources and guidelines are only available in English. According to the US Census, 13.1% of the population of Pueblo speaks a language other than English at home (11.9% of the population speaks Spanish at home).<sup>30</sup>

## Key Takeaway(s):

- There are significant opportunities to increase and streamline recycling messaging across program partner platforms that already have significant reach. This should include a process of cleaning up the official accounts associated with the site (Facebook, Yelp, etc.).
- Online information related to Pueblo RecycleWorks is inconsistent even across the City of Pueblo's website. Conflicting information related to the site's hours of operation and accepted materials can lead to confusion and frustration among residents and users of the recycling services and should be corrected immediately.
- The City of Pueblo would benefit from an easily updatable online directory for RecycleWorks and broader recycling information. Printed and PDF resources are not as nimble and cannot be updated as quickly when program changes occur.
- Recycling materials and resources should be available in English and Spanish.

---

<sup>27</sup> Pueblo Department of Public Health Facebook page: <https://www.facebook.com/PuebloHealth/>

<sup>28</sup> Pueblo Department of Public Health Instagram account: <https://www.instagram.com/pueblohealth/>

<sup>29</sup> Pueblo County Facebook page: <https://www.facebook.com/PuebloCounty/>

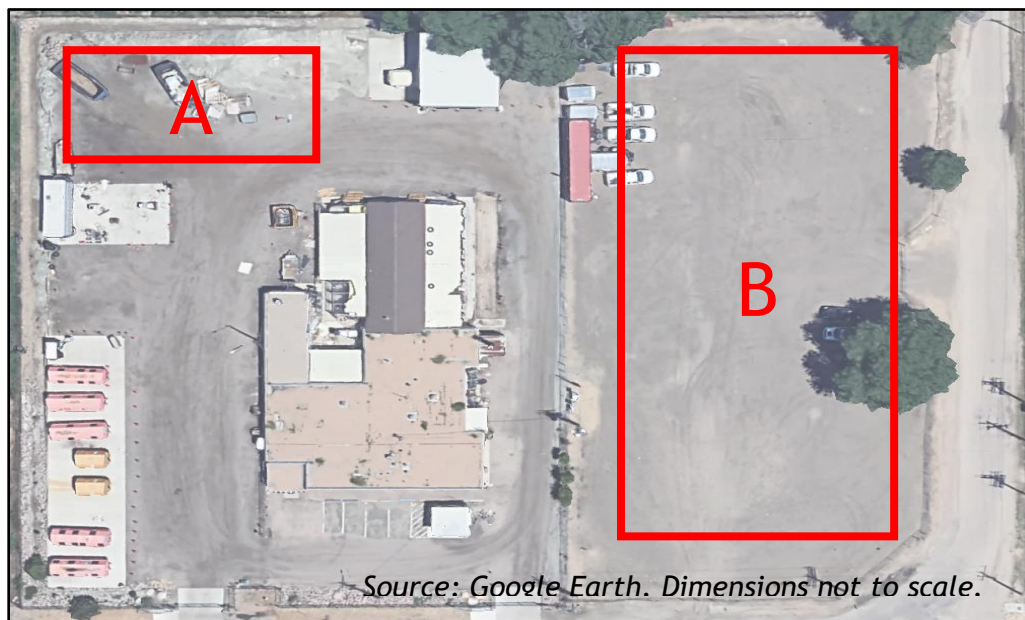
<sup>30</sup> US Census Profile for Pueblo:  
[https://data.census.gov/profile/Pueblo\\_CCD,\\_Pueblo\\_County,\\_Colorado?g=060XX00US0810192983](https://data.census.gov/profile/Pueblo_CCD,_Pueblo_County,_Colorado?g=060XX00US0810192983)

## Section 4: Slash and Mulch Site

The following section presents the findings of the mulch and slash site analysis conducted for Pueblo RecycleWorks. The project team examined two possible locations for slash collection and mulching at RecycleWorks' existing location. Considerations and limitations were examined given three different throughput scenarios first identified in Pueblo's FRWD 2022 grant application.

### Analysis Method

Two areas were evaluated to manage three different amounts of clean wood, shown in the image below. Area A is on the northwest corner of the site and is approximately 100 feet by 50 feet, and Area B is on the eastern part of the site and is approximately 110 feet by 240 feet. Both areas account for 20 feet perimeter access around the piles. Half of the areas were used to account for space needed for equipment and to store the ground material. The throughput capacities evaluated were: 500, 1,000, and 50,000 tons per year (TPY)<sup>31</sup>.



The following is a list of assumptions used for the analysis:

- Working days per year: 208 (equivalent to 4 days per week)
- Side slope of a clean wood pile: 1:1.5 (v:h)
- Pile height: 15 feet
  - This pile height is conservative and is based on experience to reduce fire risk. The 2018 International Fire Code allows woodchips and raw products associated

<sup>31</sup> Using the Pueblo County population of 169,622, these scenarios equate to an average household generation rate of approximately 6, 12, and 600 pounds of clean wood waste per household per year, respectively.



with yard waste and recycling facility to go up to 25 feet<sup>32</sup> as well as requirements for weekly temperature monitoring of static piles and other requirements.

- CAT 930M tip clearance is 9' 3".<sup>33</sup> With this model, the loader would have to drive on top of the unground material to build a taller pile or would have to scoop it up from the floor and move it up the face/slope of the pile to make it taller.
- Pile volume:  $\frac{2}{3} \times \text{width} \times \text{length} \times \text{height}$
- Bulk density of unground material: 250 pounds per cubic yard<sup>34</sup>
- Half of the areas were used to account for equipment handling and for storage of ground material.

## Findings

The following tables show the annual throughputs for the two areas, daily volume throughput, and the time that it would take to fill up the areas. In other words, how often the material would need to be processed and hauled away.

Area A has a volume capacity of approximately 440 cubic yards at any one time. Table 12, below, summarizes how long it would take to fill this area with feedstock.

**Table 12: Time to Fill - Area A**

ANNUAL THROUGHPUT	DAILY VOLUME THROUGHPUT	TIME TO FILL UP AREA	
		days	weeks
tons per year	cy per day		
500	19	23	6
1,000	38	12	3
50,000	1,923	< 1	< 1

Area B has a volume capacity of approximately 4,900 cubic yards at any one time. Table 13, below, summarizes how long it would take to fill this area with feedstock.

**Table 13: Time to Fill - Area B**

ANNUAL THROUGHPUT	DAILY VOLUME THROUGHPUT	TIME TO FILL UP AREA	
		days	weeks
tons per year	cy per day		
500	19	254	64
1,000	38	127	32
50,000	1,923	2.5	1

<sup>32</sup> 2018 International Fire Code Section 2808.

<sup>33</sup> CAT specifications sheet from grant application.

<sup>34</sup> EPA Volume-to-Weight Conversion Ratios, uncompacted mixed yard waste.

## Equipment

There are a variety of grinders that can process between 7 and 70 tons per hour and even more depending on the screen size and material. The costs are in the range of \$300,000-900,000.<sup>35</sup> The grinder in the budget on the 2022 City of Pueblo FRWD grant application is the M&J 4000M shredder, \$561,700. This shredder can process up to 35 tons per hour of industrial waste and up to 100 tons per hour of household waste. The processing capacities of the equipment are limited based on the type of material to be ground, how wet or dry it is, how long it has been stockpiled for, and the screen used in the grinder. Colorado mulches are generally 2-3-inch minus.<sup>36</sup> This can be accomplished by using the correct screen sizes in the grinder. A screen goes inside of the grinding chamber and assists with size reduction. A way to reduce wear and tear and fuel on the machine is to run a bigger screen, followed by a smaller one to obtain the right size for the finished product.

For small or unknown amounts, it is recommended that the City works with a local contract grinding company to process the material and potentially have that contractor haul it away too. As the site grows and the supply of feedstock grows, the City could then evaluate purchasing its own equipment or sharing it with other cities nearby. Without clear data, including seasonal data, the recommendation is to contract out the grinding or lease equipment and later explore purchasing.

Some examples of the large equipment are the following: [M&J 4000M shredder](#), [Ecoverse 315K grinder](#), [Peterson 5170D horizontal grinder](#), and [Rotochopper B66 horizontal grinder](#). If small amounts are to be processed regularly, the City should evaluate smaller equipment.

## Managing Throughput in Available Space

1. Available space - review the area and measure how far away piles need to be from fences and structures. General recommendation is 20 feet. At a minimum, consider heavy equipment maneuverability, fire breaks, traffic turnaround, staff access.
2. Equipment - for the smaller amounts, evaluate hiring a contractor to grind and haul the material out. Consider sharing a large piece of equipment with other municipalities. Evaluate leasing out equipment for a short period of time instead of buying it. Ensure staff know how to feed the grinder (i.e. loader or excavator with grapple buckets; examples shown below).

---

<sup>35</sup> Biocycle articles: [Compost Facility Planning Costs](#) and [Grinders](#); Ecoverse estimate.

<sup>36</sup> References: [A1 Organics](#), [SavaTree](#), and [Mile High Tree Care](#).



Example loader with grapple bucket.



Example excavator with grapple bucket.

- a. If the City does the processing, then a grinder and a piece of equipment to load into the grinder are necessary (loader, excavator, or bulldozer).
- b. If the City decides to contract a grinding company, then the City should evaluate what piece of equipment will be needed to manage the yard waste staging and storage in between grinding events. The City should look into loaders, excavators, or bulldozers to pile up the material to a reasonable height based on equipment available and fire prevention plan.
3. Fire - Contact the local fire department to understand any concerns and how to mitigate them. They may only feel comfortable with piles a certain height or length for example. Develop a fire prevention plan.
4. Throughput - Evaluate historical data of material that has been managed at the site. Understand the type of vehicle it arrives in, how it is delivered, level of contamination, types of materials, etc.
5. Traffic - Evaluate the turnaround points for vehicles dropping off material and any potential lines that may form, including entrance and exit area.

## Next Steps

1. Determine what tonnage the City should plan for in the next 12 months.
2. Decide which area will be utilized. Measure it and mark where the ends of the piles will be.
3. Evaluate all local and state regulations related to the proposed operation.
4. Develop a traffic plan for residents driving in and out of the site with materials.
5. Estimate anticipated mulch quantities and find end markets for this material (residential give-back program, Parks and Recreation, other).
6. Develop a method to process the material to meet the market demand (i.e. contract grinding, what type of trucks will be used, how frequently, etc.).

7. If the City is to process the material, then evaluate the correct equipment to ensure it meets your needs and expectations for at least capital expenses, operating expenses, fuel consumption, service speed, and spare parts.
8. Develop a fire prevention plan and work with the fire department to approve it.
9. Have backup plans in case the equipment or contractor are not able to process the material.

## Section 5: Recommendations

The following recommendations are informed by the project team's research and completion of previous tasks such as site tours, slash/mulch evaluation, and the system evaluation.

### Overall

- With the new Producer Responsibility program on the horizon in Colorado<sup>37</sup>, Pueblo RecycleWorks should prepare to shift its focus to materials not covered by the new statewide recycling program. This can include recyclables that are challenging to manage curbside (such as glass), materials that are generated in high-volume (such as cardboard), materials that are currently accepted at Pueblo RecycleWorks that will not be included in the Producer Responsibility program (such as large items, tires, and mattresses), as well as additional recyclables materials that are not currently accepted at RecycleWorks and will not be included in the new Producer Responsibility program implementation (such as yard debris and food scraps).
- Entities involved in recycling across the City of Pueblo and Pueblo County should convene regularly to discuss recycling programs, challenges, partnerships, and opportunities for greater collaboration. One option would be to convene a monthly or bi-monthly virtual meeting for public sector staff involved in recycling efforts, with the option to include vendors and processors as needed.
- Pueblo RecycleWorks and partners should support system improvements for Pueblo's recycling processing infrastructure. This may include sorting and baling upgrades at Design for Recycle, Pueblo County's internal recycling efforts, the possible Front Range Transload facility currently being championed by the Circular Economy Development Center, and other vendors that enable recycling across the county. As these entities prepare grant applications, City of Pueblo and Pueblo County Public Health staff should be prepared to provide letters of support, as appropriate.
- To promote efficient use of RecycleWorks' footprint in the long term, the City of Pueblo should consider options for deconstructing or demolishing the dog kennel structure located at the center of the current site. This structure is not functional or utilized by RecycleWorks and takes up approximately 0.3 acres of the 1.3-acre site.

---

<sup>37</sup> Implementation is estimated to begin in 2026.

Public Works staff should also explore formalizing the ability to utilize City-owned properties to the east and west of RecycleWorks. Use of either parcel could open doors to future program options for organics processing.

## Short-Term

- The City of Pueblo should submit an RREO Recycling Rebate application for materials collected in 2023. This application should be available in April and will provide a rebate for recycling drop-off activity expenses incurred in 2023.
- Pueblo RecycleWorks must register with the Colorado Department of Public Health and Environment (CDPHE) as a registered recycler under Section 8.3 of the Department's Hazardous and Solid Waste regulations. This registration process is very streamlined and includes the submission of a short Initial Registration Form, an operations plan, and annual tonnage reporting. Current mattress processing activities and recommended future slash/mulch activities qualify the RecycleWorks site for this '8.3 MRF' designation with the State.

## Material-Specific

- To reduce staff processing time and to recover additional commodities, the City of Pueblo should consider partnering with a contractor that can collect, process, and recycle components from mattresses and other bulky furniture items such as couches and sofas.
- RecycleWorks should continue to pilot and prioritize the new partnership with Glass to Glass. The highest and best use for glass is bottle-to-bottle recycling and glass is one of the only materials that can be processed and turned back into a new product without leaving the state. Previously, all glass was crushed on site and the city did not have consistent end uses for this product, nor could this material get turned back into bottles.
- Additional materials poised for collection at RecycleWorks could include expanded polystyrene (commonly known as Styrofoam™), bulky rigid plastics, scrap metal (beyond what is brought in as 'Large Items'), motor oil, antifreeze, and cooking oil.
- Given the challenging landscape of plastic recycling in Pueblo, the project team identified three possible pathways for eventually bringing plastic #1 and #2 collection back to Pueblo RecycleWorks. Of the three options, the project team recommends option 1, that the City of Pueblo works with Design for Recycle (formerly Roots Recycling) and supports efforts to bring operational capacity back to their facility. Operational efficiency improvements at Design for Recycle could include a new baler for more cost-efficient handling of this material during the commodity market downturn.

## Household Hazardous Waste (HHW) Program Options

- The City and County should continue to monitor grant funding opportunities that specifically support household hazardous waste materials and HHW programs.
- A large portion of HHW materials from households include materials covered by the PaintCare program. Pueblo County Public Health and City partners can and should do more to promote free and existing options for managing paint, primers, stains, sealers, and clear coatings such as shellac and varnish. Three of the four PaintCare drop-off locations within the City of Pueblo are included in Pueblo County Public Health's PDF Recycling Guide, but more active promotion of this program would benefit the community and minimize the materials that require processing through HHW events and potential facilities.
- As other Front Range communities have done at their existing recycling drop-offs, RecycleWorks could consider adding infrastructure to allow for the collection of certain easier to handle and readily recyclable HHW materials such as motor oil, antifreeze, and used cooking oil. Pueblo RecycleWorks is already piloting the collection of motor oil and antifreeze during collection events hosted at RecycleWorks.
- For all remaining HHW materials not covered by other programs or other recommendations, Pueblo should continue to pursue options for a private HHW processing partner to collect materials from a centralized collection point or to provide appointment-based curbside services. Periodic HHW collection events can still be a great supplement to these more permanent and ongoing program recommendations.

## Slash/Mulch Program

- RecycleWorks should develop a pilot collection program for slash materials (branches/brush) and contract with a third-party grinding service for processing. Feedback from this pilot can inform long-term funding needs for ongoing program deployment after the pilot phase.

## Online Resources and Marketing

- The City and the County should work together to add Pueblo County addresses to the parcel data included in the new online program and to establish a per unit cost sharing amount for the County to provide to the City to cover the handling costs associated with collecting additional items from Pueblo County residents.
- The City of Pueblo and program partners should clean up online accounts associated with Pueblo RecycleWorks. The City of Pueblo should endeavor to 'claim' and manage online accounts related to RecycleWorks such as the RecycleWorks Facebook and Yelp pages. The account cleanup process should include updating site hours on all web sources to ensure consistency.



- Staff should build a unified online presence for RecycleWorks by leveraging the various RecycleWorks, City of Pueblo, Pueblo County, and Pueblo County Public Health online accounts. The City and the County should partner to develop a messaging calendar to include season-specific messaging, tips and tricks, stories or highlights of the materials collected, diversion numbers, and other interesting facts about RecycleWorks and recycling options in Pueblo. Each account should aim to post at least one RecycleWorks message each month.
- Outdated materials, such as the Recycle Guide included on the RecycleWorks website should be removed and replaced with updated content.
- The City and the Pueblo County Public Health should consider an online, updateable recycling director tool, such as those utilized by peer communities<sup>38</sup>. Recent program changes, such as the abrupt suspension of plastic recycling services at RecycleWorks, have highlighted the need to provide real-time and responsive information. Current PDFs and flyers do not offer this flexibility.
- All RecycleWorks flyers and brochures should be offered in English and in Spanish.

---

<sup>38</sup> An example is the Denver ‘Waste Directory’ found here:  
<https://www.denvergov.org/Government/Agencies-Departments-Offices/Agencies-Departments-Offices-Directory/Recycle-Compost-Trash/Recycle/Accepted-for-Recycling>.

## Appendix A: Tour Photos

### Pueblo RecycleWorks



Roll-offs located at Pueblo RecycleWorks collect office paper and mixed paper / newspaper.



Roll-offs located at Pueblo RecycleWorks collect aluminum cans and steel/tin cans.





Aluminum cans are collected inside a roll-off at Pueblo RecycleWorks.



Clean steel cans are collected inside a roll-off at Pueblo RecycleWorks.



PET plastic containers (#1) are collected in roll-off container at Pueblo RecycleWorks.



HDPE plastic containers (#2) are collected in a roll-off at Pueblo RecycleWorks.





A cardboard compactor collects flattened cardboard at Pueblo RecycleWorks.





An open-top roll-off collects glass bottles and jars at Pueblo RecycleWorks.



A custom collection container collects LDPE and HDPE film plastics for Driven Plastics.

## Roots Recycling



Durable, reusable bags are used by Roots Recycling to collect dual-stream materials from households in the Pueblo community.



Bales of plastic are stored at the Roots Recycling facility.





Additional bales of plastic and cardboard are stored at the Roots Recycling facility.

## Driven Plastics

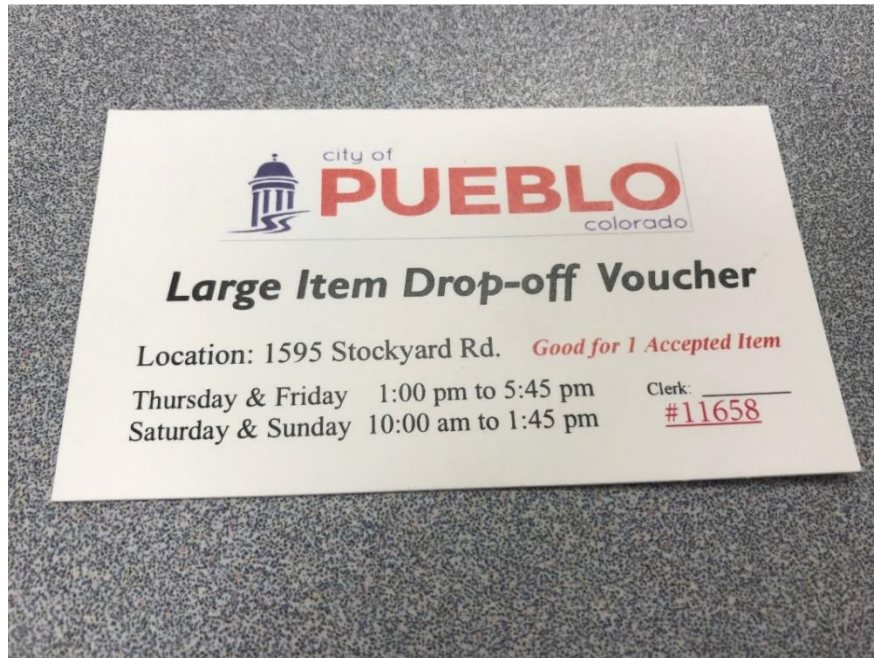


Plastic film collected from Pueblo County facilities is prepped for shredding at Driven Plastics' facility.



Containers filled with shredded plastic film await further processing at Driven Plastics' facility.

## City of Pueblo, Department of Public Works



An example of a Large Item voucher that is sold at the Department of Public Works office.

## Appendix B: Facility Tour Attendees

### Full-Day Tour Attendees:

- Aaron Martinez, Pueblo County Public Health
- Arleen Aguirre, Pueblo County Public Health
- Jared Miera, Pueblo County
- Jacquelin Hernandez-Portillo, Pueblo County
- Erin Girard, CDPHE
- Tay Dunklee, TASP Project Team

### Tour Facilitators at Individual Facilities:

- Robert Banham, RecycleWorks, City of Pueblo Public Works
- Nathan Harper, Roots Recycling
- Adam Farmer, Driven Plastic
- Office Administrator, City of Pueblo Public Works
- Andrew Hayes, City of Pueblo Public Works



# Appendix C: Pueblo RecycleWorks Flyer

This brochure is available in print at the Public Works voucher office and downloadable on the Pueblo RecycleWorks website.

### IMPORTANT

Contaminated recycling bins have a greater chance of being sent to the landfill. **Do your part and please use the correct bin for your item.**

We have separate bins for: Cardboard, Glass, 1 & 2 Plastics, White Office Paper, Mixed Paper, Aluminum, & Steel/Tin Cans

### LARGE ITEMS & TIRES

**(VOUCHER REQUIRED)**

Furniture, Sofa, Chairs, Mattress, Boxspring, Desks, Cabinets, & Tires

Appliances – Oven, Washer, Dryer, Dishwasher, & Gas Grill  
*(No Freon Appliances)*

Vouchers purchased from:  
211 E. D St., Pueblo 81003

### MAP

### HOURS

Thursday & Friday  
1:00 pm - 5:45 pm  
Winter Hours:  
12:00 pm - 4:45 pm

Saturday & Sunday  
10:00 am - 1:45 pm

Hours are subject to change. Facility closed for high wind or extreme weather.

### ADDRESS

1595 Stockyard Rd  
Pueblo, CO 81001  
719-553-2748  
[www.pueblo.us/recycleworks](http://www.pueblo.us/recycleworks)

All info subject to change

## PUEBLO RECYCLEWORKS

1595 Stockyard Rd  
Pueblo, CO 81001  
719-553-2748  
[www.pueblo.us/recycleworks](http://www.pueblo.us/recycleworks)

Thursday & Friday 1:00 pm - 5:45 pm  
(Winter Hours 12:00 pm - 4:45 pm)

Saturday & Sunday 10:00 am - 1:45 pm

*Providing Monitored Self-Service Recycling to Southern Colorado Since 2018*

### CARDBOARD

- Corrugated
- Flattened
- Paperboard
- Bulk item boxes
- Paper towel rolls
- Snack and Cereal boxes

**NO cardboard or paperboard that is wet, painted, or contaminated with food waste (like used pizza boxes) accepted**

### PLASTICS (THROW OUT LIDS PLEASE)

Water bottles, soda bottles, salad dressing containers, and many transparent plastic food containers marked with a "1" enclosed by a recycling arrow triangle are permitted for recycling.

Milk jugs, detergent bottles, shampoo bottles, and other often opaque, high-density, or thick plastic bottles that bear the "2" symbol enclosed by a recycling arrow triangle are gladly accepted for recycling.

### WHITE OFFICE PAPER

- Copier/Printer paper
- White junk mail (window envelopes okay)
- Lined school paper
- All ink colors on paper okay if paper is white
- Shredded paper must be in a closed paper bag.

### GLASS

- Food and drink bottles and jars
- Rinsed and Clean

### ALUMINUM

- Soda & Beer cans
- Cat food (most)
- Crushed

### STEEL & TIN

- Soup & Food cans
- Rinsed and Clean

### REJECTED PLASTICS

**NO**

- Styrofoam
- Packing Peanuts
- Plastic Bags or wrap
- Drinking straws
- Any plastics without 1 or 2

### MIXED PAPER

- Magazines
- Newspaper
- Wrapping paper (excluding foil or glitter)
- Paper bags
- Greeting Cards
- Phone books
- No Kleenex or Paper Towels

**ALL RECYCLING MUST BE SORTED, CLEAN, AND DRY**





# Appendix D: Pueblo Recycle Guide

This guide is currently available on the Pueblo RecycleWorks site but contains several sections of outdated and inaccurate information.

**Located at:**  
1595 Stockyard Rd.  
Pueblo Colorado, 81001  
719-553-2748  
[www.pueblo.us/recycleworks](http://www.pueblo.us/recycleworks)

**Hours:**  
**Thursday & Friday 1pm-6pm**  
*Gates close at 5:45pm*  
**Saturday & Sunday 10am-2pm**  
*Gates close at 1:45pm*

<p><b>Paper</b></p> <p><b>Accepted</b></p> <ul style="list-style-type: none"> <li>• Office paper</li> <li>• Brown paper bags</li> <li>• Junk mail</li> <li>• Phone books</li> <li>• Magazines</li> <li>• Greeting cards</li> <li>• Envelopes</li> <li>• File folders</li> <li>• Shredded paper (in paper-bag)</li> </ul> <p><b>Not Accepted</b></p> <ul style="list-style-type: none"> <li>• Napkins</li> <li>• Toilet paper</li> <li>• Paper towels</li> <li>• Wax paper</li> <li>• Dryer sheets</li> <li>• Paper cups</li> <li>• Coffee cups</li> <li>• Paper plates</li> <li>• Carbon paper</li> <li>• TYVEK Envelopes</li> <li>• NO 3-ring Binder/Comb</li> </ul> <p><b>Newspaper</b> <i>No rubber bands</i></p> <p><small>*You do not have to remove staples, paper clips, plastic windows, or tape.</small></p>	<p><b>Cardboard</b></p> <p><b>Accepted</b></p> <ul style="list-style-type: none"> <li>• Corrugated cardboard</li> <li>• Office supply boxes</li> <li>• Produce boxes</li> <li>• Moving boxes</li> <li>• Clean pizza boxes</li> <li>• Paperboard</li> <li>• Cereal boxes</li> <li>• Paper towel rolls</li> <li>• Toilet paper rolls</li> <li>• Snack boxes</li> </ul> <p><b>Not Accepted</b></p> <ul style="list-style-type: none"> <li>• Dirty pizza boxes</li> <li>• Oily cardboard</li> <li>• Paint covered cardboard</li> <li>• Moldy cardboard</li> <li>• Wet cardboard</li> <li>• NO Milk/Broth cartons</li> </ul> <p><b>* Break down / flatten all cardboard</b> Remove all 'Tanglers' - twine, string, plastic handles, etc.</p>
<p><b>Plastics</b></p> <p><b>Accepted</b></p> <p><b>#'s 1-5 &amp; 7</b></p> <ul style="list-style-type: none"> <li>• Water bottles</li> <li>• Milk jugs</li> <li>• Detergent bottles</li> <li>• Medicine bottles</li> <li>• Vitamin bottles</li> <li>• Yogurt containers</li> </ul> <p><b>Not Accepted</b></p> <ul style="list-style-type: none"> <li>• Plastic bags</li> <li>• Plastic wrappers</li> <li>• Peanuts</li> <li>• Take-out containers</li> <li>• Plates or cups</li> <li>• Juice/milk carton</li> <li>• 'Spitter' bottles</li> <li>• Styrofoam of any kind</li> <li>• NO #6 'PS'</li> </ul> <p><b>!!! CRUSH your plastics !!!</b></p> <p><b>Please NO Other Plastics!</b></p>	<p><b>Aluminum</b></p> <p><b>Accepted</b></p> <ul style="list-style-type: none"> <li>• Aluminum cans</li> <li>• Clean aluminum foil</li> <li>• Clean pie tins</li> </ul> <p><b>Not Accepted</b></p> <ul style="list-style-type: none"> <li>• Soiled aluminum foil</li> <li>• Dirty steel/tin cans</li> <li>• Razor blades</li> <li>• Saw blades</li> <li>• Needles</li> <li>• Syringe</li> </ul> <p><b>Tin/Steel</b></p> <ul style="list-style-type: none"> <li>• Steel food cans</li> <li>• Tin food cans</li> <li>• Copper wire</li> <li>• Empty aerosol cans</li> <li>• Metal lids</li> <li>• Metal bottle caps</li> </ul> <p><small>* Empty all aerosol cans completely. * Labels do not have to be removed **RecycleWorks does not pay for metal.</small></p>
<p><b>Glass</b></p> <p><b>Accepted</b></p> <ul style="list-style-type: none"> <li>• Jars- all colors</li> <li>• Bottles - all colors</li> </ul> <p><b>Not Accepted</b></p> <ul style="list-style-type: none"> <li>• Window-pane glass</li> <li>• Pyrex</li> <li>• Tempered glass</li> <li>• Mirrors</li> <li>• Light bulbs</li> <li>• Ceramics</li> <li>• Drinking glasses</li> <li>• Dishes</li> <li>• Dirty jars and bottles</li> <li>• Flower vases</li> <li>• Crystal glasses /dishes</li> </ul>	<div style="border: 2px solid red; padding: 10px; text-align: center;"> <p><b>Plastic Bags</b></p> <p><b>Plastic Film or Wrap</b></p> <p><b>Food Waste</b></p> <p><b>Styrofoam</b></p> <p><b>Juice/Milk/Broth Paper Cartons</b></p> <p><b>Trash / Garbage</b></p> <p><b>Compost / Yard Waste</b></p> <p style="font-size: 2em; color: red; font-weight: bold;">NO!</p> </div>

**No Liquid or Food Waste**      **'If in doubt throw it out!'**

**All recycled materials must be sorted, clean, & dry**

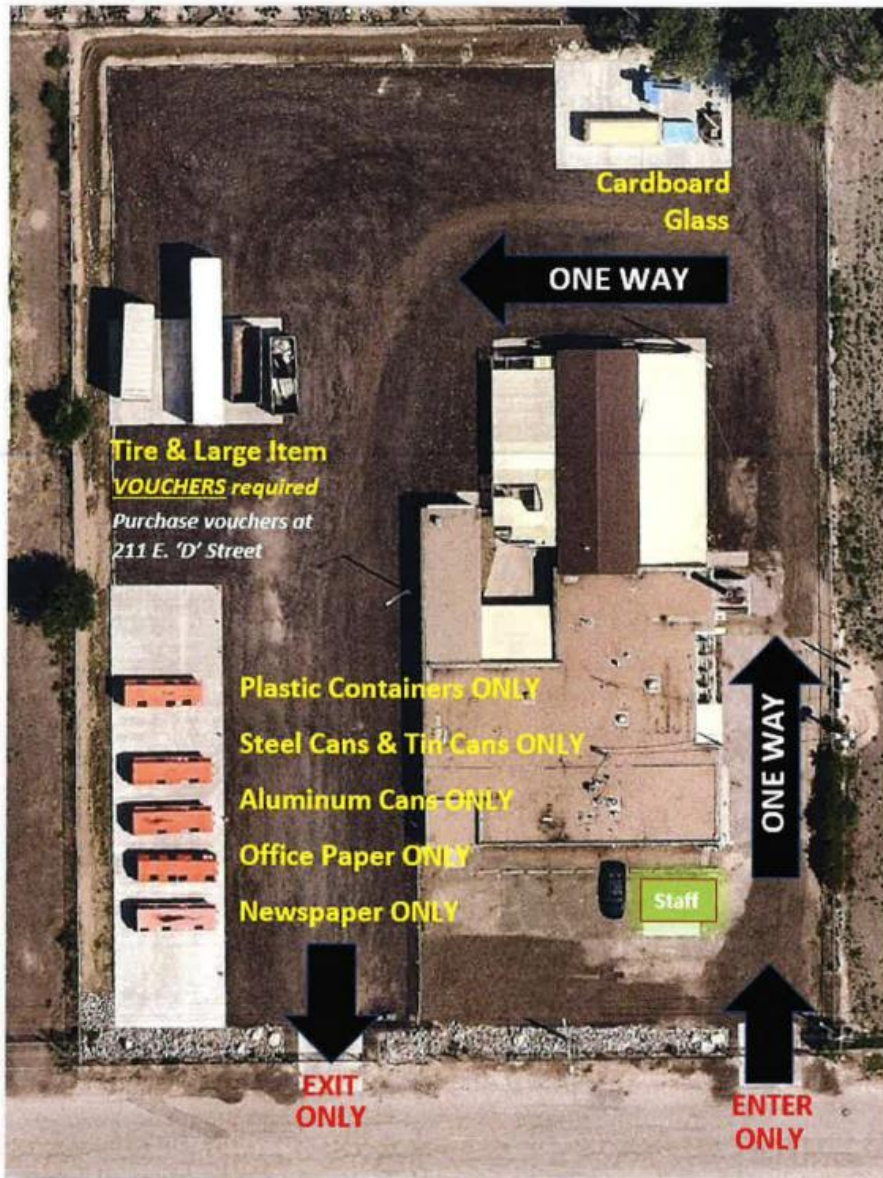
*We thank you for your cooperation!*



# PUEBLO



## RECYCLEWORKS



**Site Map for Pueblo RecycleWorks**  
**1595 Stockyard Rd.**



# Large Item & Tire Vouchers

**City of Pueblo Residents Only**

**1595 Stockyard Rd. (east of HWY 227)**

**Hours of Operation**

**Thursday & Friday**      **1:00 pm – 6:00 pm** (*gates close at 5:45pm*)

**Saturday & Sunday**      **10:00 am – 2:00pm** (*gates close at 1:45pm*)

**SITE WILL BE CLOSED DURING SEVERE WEATHER**

'Large Item' and 'Tire' disposal vouchers are for sale to **City of Pueblo residents ONLY**. Vouchers may be purchased at the City of Pueblo, Department of Public Works located at 211 E. 'D' Street.

To purchase a voucher, bring a valid ID or recent utility bill. The cost of the 'Large Item' voucher is \$10 per item and will be limited to 4 vouchers per address per year. The cost of a 'Tire' voucher is \$1 per tire and will be limited to 9 tire vouchers per address per year. The vouchers are only for passenger-sized tires or smaller.

No vouchers will be sold at Pueblo RecycleWorks.

Be sure to have your voucher(s) when bringing items.

**ITEMS ACCEPTED:**

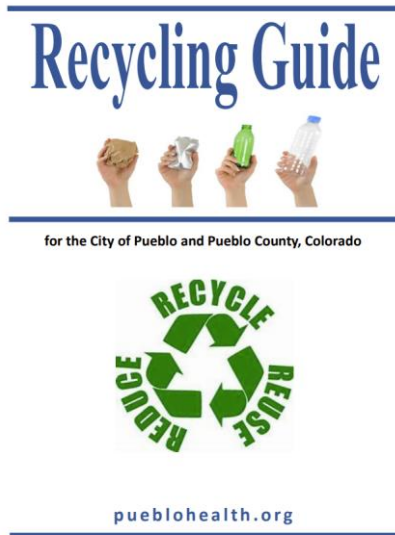
- **Mattress or Box Spring**
- **Sofa**
- **Love Seat**
- **Chair (including recliner)**
- **Washer, Dryer, Stove, Dishwasher;**
  - **NO electronics, TV's, computers, microwaves, AC units**
- ~~CLEAN Freezer or Refrigerator -- now accepted (with or without freon)~~ **SUSPENDED**
- **Table**
- **CLEAN toilet or sink**
- **Other household furniture items**

**For more information call Public Works at 719-553-2295**

Funded by the Landfill Tipping Fee &  **PUEBLO**  
colorado

# Appendix E: Pueblo County Public Health Recycling Guide

This PDF Recycling Guide is found on the Pueblo County Public Health recycling page.



Readers are encouraged to contact each store, business, or organization for the most current information regarding hours, recycling procedures, acceptable items, and recycling fees.

## Household Recycling

Items that may be accepted are bottles, cans, glass, plastic containers, cardboard, news and mixed papers. No plastic bags or polystyrene foam containers are accepted.

**C & C Disposal and Recycling Services** [ccdisposalco.com](http://ccdisposalco.com)  
Main Office: (719) 647-9100  
Transfer Station: 1401 Quartz Road, Pueblo (north of Love's Travel Stop) (719) 924-1884  
Offers residential and business curbside recycling for a fee; or FREE drop-off at Transfer Station.

**Roots Recycling** [rootsrecycling.com](http://rootsrecycling.com)  
Main Office/Operations: 20 Environmental Place, (719) 542-6327  
Offers curbside recycling pick-up to residential and small business customers for a monthly fee. A variety of membership options are available. Check the website for details and locations.

**Disposal Vouchers**  
Pueblo Recycleworks Large Item and Tire Vouchers.  
Vouchers can only be purchased at Pueblo Public Works  
211 East D Street (719) 553-2295  
Large items accepted:  
Mattress or box spring, sofa, love seat, chair (including recliner), washer, dryer, stove, dishwasher, table, clean toilet or sink, other household items. NOT accepted: electronics, TVs, computers, microwaves, AC units, refrigerators, freezers.

## PUEBLO RECYCLEWORKS

Recycle Drop-off Center

Thursday-Friday 1:00-5:45 pm

Saturday & Sunday 10:00 a.m.-1:45 pm

[www.pueblo.us/recycleworks](http://www.pueblo.us/recycleworks)



**1595 Stockyard Road** **Recycle Drop-off Center**

 <b>FLATTENED Cardboard</b>	 <b>NEWSPAPERS</b> - no rubber bands	 <b>OFFICE PAPERS</b> Magazines, Catalogs, Schoolwork, Old Mail	 <b>PLASTICS</b> Kitchen, Laundry, Bath: Bottles & Containers - empty & rinse; caps OFF!
 <b>GLASS</b> Bottles and Jars - empty & rinse; NO caps or lids!	 <b>ALUMINUM</b> -Cans, pie plates, clean foil	 <b>STEEL/TIN CANS</b> - empty & rinse	<b>PLASTIC BAGS or WRAP</b> <b>FOOD WASTE</b> <b>STYROFOAM</b> <b>NO!</b> <b>MILK CARTONS</b> <b>TRASH / GARBAGE</b>

[www.pueblo.us/recycleworks](http://www.pueblo.us/recycleworks) (719) 553-2748




Before you go:

Clean and Dry items



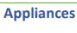

Group items into categories

Call for large item or tire disposal instructions




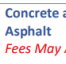


2

	<p><b>Home Depot</b> (drop box), 4450 N. Freeway Rd., 545-5400</p> <p><b>Lowes's</b> (drop box) North: 1225 Hwy 50 West, 543-3339 South: 2900 W. Pueblo Blvd. 289-9110</p>
	<p><b>Advanced Auto Parts</b> North: 900 Hwy 50 West, 543-8881 South: 1236 S. Prairie Ave., 561-3993 Belmont: 2015 N. Hudson, 423-4985</p> <p><b>American Battery Corp.</b>, 2516 N. Freeway, 546-2281</p> <p><b>Batteries + Bulbs</b>, 1408 Hwy 50 West, 583-8766</p> <p><b>O'Reilly Auto Parts</b> North: 1005 Hwy 50 West, 545-6470 South: 3066 W. Northern Ave., 564-4855 Pueblo West: 1016 Market Plaza, 547-2466 • \$10 gift-card for each battery up to 5 batteries /day</p>
	<p><b>Great Divide</b>, 400 N. Santa Fe Ave., 546-2453</p> <p><b>Green Chile Bike Bank</b>, 807 N Greenwood, 283-6039, restores, repairs and recycles bikes, open only Tuesdays (6-9pm) <a href="https://gcbbpueblo.org/">https://gcbbpueblo.org/</a></p> <p><b>Nick's Bike Shop</b>, 74 Component Dr., Suite #140, Pueblo West, 647-1150 <a href="https://www.nicksbikes.com/">https://www.nicksbikes.com/</a></p>
	<p>See: Thrift Stores</p> <p><b>Reusable Condition Only: No Encyclopedias, No Magazines</b></p> <p><b>Books Again</b>, 622 S. Union Ave., 543-4688 <a href="http://booksagain-pueblo.com">booksagain-pueblo.com</a></p>

4


	<p><b>American Iron and Metal</b>, 1801 S. La Crosse Ave., 542-5865, pays market price/pound <a href="http://www.americaniron.com/scrap-metal-recycling-locations/pueblo-co">www.americaniron.com/scrap-metal-recycling-locations/pueblo-co</a></p> <p><b>Dionisio Metal and Iron</b>, 700 S. Portland Ave., 544-3488, pays market price/pound <a href="http://www.dionisio.com/">http://www.dionisio.com/</a></p> <p><b>Pueblo RecycleWorks</b>, 1595 Stockyard Rd., 553-2748 <a href="http://www.pueblo.us/recycleworks">www.pueblo.us/recycleworks</a></p>
	<p><b>Advanced Auto Parts</b>, 900 W. Hwy 50 West (only), 543-8881, also accepts motor oil. Limit 5 gallons per visit.</p> <p><b>Grease Monkey</b>, 421 29th St., 545-3389, also accepts motor oil. Limit 5 gallons per visit.</p>
	<p>Working items are accepted at all Thrift Stores <b>Habitat for Humanity ReStore</b>, 2313 Prairie Ave., 543-0702 (electric only) <a href="https://hfhpbueblo.org/">https://hfhpbueblo.org/</a></p> <p><b>Appliance King</b>, 305 W. Northern Ave., 545-6472, recycle for free: stoves, washers, dryers. Charges fee for refrigerators. Non-working items: See Scrap Metal</p> <p><b>Dionisio Metal and Iron</b>, 700 S. Portland Ave., 544-3488, pays market price/pound <a href="http://www.dionisio.com/">http://www.dionisio.com/</a></p>
	<p><b>Batteries + Bulbs</b>, 1408 Hwy 50 West, 583-8766 Recycling fee; (must be separate from nickel hydride, lithium)</p> <p><b>Best Buy</b> (drop box), 5890 N. Elizabeth St., 253-0438</p>

3

	<p><b>Habitat for Humanity ReStore</b>, 2313 S. Prairie Ave., 543-0702, items must be reusable for resale; not accepting paint; <a href="https://hfhpbueblo.org/">https://hfhpbueblo.org/</a> Email: <a href="mailto:habitatpuebloinfo@hfhpbueblo.org">habitatpuebloinfo@hfhpbueblo.org</a></p>
	<p><b>Pueblo RecycleWorks</b>, 1595 Stockyard Rd., 553-2748 <a href="http://www.pueblo.us/recycleworks">www.pueblo.us/recycleworks</a></p>
	<p><b>Drop-off available at most cellular phone stores</b> <b>ACOVA-Pueblo County Sheriff's Office</b>, 583-6434 Drop-off at Investigation Annex</p> <p><b>Best Buy</b>, 5890 N. Elizabeth St., 253-0438</p>
	<p><b>3R Technology Solutions</b>, 1045 S. Santa Fe Ave., (720) 645-7497</p> <p><b>Best Buy Store</b> 5890 N. Elizabeth, 253-0438</p> <p><b>Staples Store</b>, 1411 Hwy 50 West, 545-1545</p>
	<p><b>Orr Pitt</b>, 1144 33rd Lane, 924-0288; <a href="http://orripit.com">orripit.com</a></p> <p><b>Flex Materials &amp; Recycling</b>, 195 Vision Lane, 542-2488</p>
	<p><b>Rocky Mountain Eye Center</b>, 27 Montebello Rd., 545-1530</p> <p><b>Visionworks</b>, 4206 North Freeway Rd., 253-2538</p>
	<p><b>Southern Colorado Services &amp; Recycling</b>, 1731 Erie Ave., 542-6910 <a href="http://southerncoloradorecycling.com">southerncoloradorecycling.com</a></p>
	<p>See: Thrift Stores</p> <p><b>American Wiping Rags</b>, 1006 Aspen Pl, 647-2744 Must be clean and high percentage of cotton. Email: <a href="mailto:americanwipingragsllc@gmail.com">americanwipingragsllc@gmail.com</a></p>

5



	<a href="http://www.americanwipingrags.com">www.americanwipingrags.com</a>
<b>Couch, Love Seat, Recliner</b>	See: Landfills, Large Item Drop off or Thrift Stores
<b>Document Destruction</b>	See: Paper Shredding
<b>Electronics &amp; electronic accessories</b> <i>Fees May Apply</i>	<b>3R Technology Solutions</b> , 1045 S. Santa Fe Ave., (720) 645-7497 See: Computers  <b>Best Buy</b> , 5890 N. Elizabeth Street, 253-0438  <b>Staples Store</b> , 1411 Hwy 50 West, 545-1545
<b>Eyeglasses (Reusable Condition)</b>  	<b>ABBA Eye Centers</b> , 1650 Hwy 50 W, 542-2020  <b>Academy Kids Vision</b> , Regency Shopping Center, 1725 S. Pueblo Blvd., 281-2633  <b>America's Best Contact Lenses &amp; Eyeglasses</b> , 5821 N. Elizabeth, 404-1765  <b>Eye Mart Express</b> , 4420 North Freeway (across from Home Depot) 296-6593  <b>Family Eye Center</b> , 712 Fortino Blvd., 542-0236; 332 S Orchard Springs, Pueblo West, 547-7709  <b>JC Penny Optical</b> , Pueblo Mall, 3429 Dillon Dr., 544-6424  <b>Mesa LaGree's</b> , 27050 US-50 BUS Unit A1, 545-5511  <b>Pueblo City-County Library</b> : Lamb Branch, 2525 S. Pueblo Blvd.; 1300 Jerry Murphy Rd.; 562-5600  <b>Rocky Mountain Eye Center</b> , 27 Montebello Rd., 545-1530

	<b>Southern Colorado Eye Care Associates</b> , 1620 Fortino Blvd., 542-3555  <b>Visionworks</b> , 4206 North Freeway Rd. 253-2538  <b>Vision Now</b> , 2568 Taylor Lane, 733-3060  <b>Walmart Vision &amp; Glasses</b> 4200 Dillon Dr., 584-2962 4080 W Northern Ave., 564-6056 78 N McCulloch Blvd., 647-9861
<b>Eyeglasses (Reusable Condition) – Outside drop-box locations</b>	<b>Bank of the San Juans</b> , 1 N. Parkway, Colorado City, (866) 618-2675  <b>Habitat for Humanity Restore</b> , 2313 S. Prairie Ave., 543-0702  <b>Pueblo Cooperative Care Center</b> , 326 W. 8 <sup>th</sup> St., 543-7484  <b>Pueblo RecycleWorks</b> , 1595 Stockyard Rd., 553-2748 <a href="http://www.pueblo.us/recycleworks">www.pueblo.us/recycleworks</a>  <b>Pueblo City-County Library</b> : 298 S. Joe Martinez Blvd., Pueblo West; 562-5600
<b>Furniture</b>	<b>Pueblo RecycleWorks</b> , 1595 Stockyard Rd., 553-2748 <a href="http://www.pueblo.us/recycleworks">www.pueblo.us/recycleworks</a>
<b>Glass Bottles and Jars</b>	<b>Pueblo RecycleWorks</b> , 1595 Stockyard Rd., 553-2748 <a href="http://www.pueblo.us/recycleworks">www.pueblo.us/recycleworks</a>
<b>Household Hazardous Materials</b>	Coming soon.
<b>Large Item Drop-Off Program</b>	<b>Pueblo RecycleWorks</b> , 1595 Stockyard Rd., 553-2748 <a href="http://www.pueblo.us/recycleworks">www.pueblo.us/recycleworks</a>






<i>Fees Apply</i>	Fees apply. <b>CITY RESIDENTS ONLY</b> , voucher required. Obtain voucher at main office: 211 E. D St, 81003. No vouchers sold at Stockyard Rd.
<b>Light Bulbs</b> <i>Fees May Apply</i> 	Compact Fluorescent Bulbs (CFLs) <b>Home Depot</b> , 4450 N. Freeway Rd., 545-5400 <b>Lowe's North</b> , 1225 Hwy 50 West, 543-3339 <b>Lowe's South</b> , 2900 W. Pueblo Blvd., 289-9100 Linear fluorescent bulbs; fees apply for 4' and 8' tubes.
<b>Magazines, Catalogs</b>	<b>Pueblo RecycleWorks</b> , 1595 Stockyard Rd., 553-2748 <a href="http://www.pueblo.us/recycleworks">www.pueblo.us/recycleworks</a>  See: Recycling bins at <b>Pueblo Community College</b> between Arthur St. and Pitkin Ave.
<b>Mattress Disposal</b> <i>Fees Apply</i>	<b>C &amp; C Disposal &amp; Recycling Services</b> Transfer Station, 1401 Quartz Road, 924-1884; Hours: 8:00am–5:00pm  <b>Pueblo RecycleWorks</b> , 1595 Stockyard Rd., 553-2748 <a href="http://www.pueblo.us/recycleworks">www.pueblo.us/recycleworks</a> <b>CITY RESIDENTS ONLY</b> , voucher required. No vouchers sold on site. Obtain voucher at main office: 211 E. D St, 81003. No vouchers sold at Stockyard Rd.
<b>Medication Disposal</b> 	<b>Walgreens Pharmacy</b> (two locations): 2900 Northern Ave (near Prairie Ave) 561-9728 1013 Bonforte Blvd. (by Hunter Dr.), 544-9998 Look for the drop-box located near the pharmacy. Old, expired, or surplus prescription and over-the-counter medications accepted.  <b>St. Mary Corwin Pharmacy</b> , 1008 Minnequa Ave., 557-5676;  <b>Kaiser Permanente Pharmacy</b> , 3670 Parker Blvd., Suite 200, 595-5367

<b>Microwave Ovens</b>	See: Electronics
<b>Motor Oil</b> <i>Call in advance!</i>	Many auto service stations and oil change centers accept used motor oil and other auto fluids in smaller quantities limit 5 gallons per visit. <b>Advance Auto Parts (2 locations)</b> 1236 S Prairie Ave., 561-3993 900 W US Highway 50, 543-8881  <b>AutoZone</b> (four locations) North: 1617 Hwy 50, 542-4048 South: 3015 Northern Ave., 564-1000 Belmont: 1108 Bonforte Blvd., 542-9000 Pueblo West: 957 Hailey Ln., 547-0398  <b>Grease Monkey</b> , 421 W. 29th St., 545-3389, also accepts oil filters, antifreeze  <b>Log Loob</b> , 3360 Northern Ave., 564-5823, also accepts oil filters, antifreeze  <b>O'Reilly Auto Parts</b> (get store credit) North: 1005 Hwy 50 West, 545-6470 South: 3066 W. Northern Ave., 564-4855 Pueblo West: 1016 Market Plaza, 547-2466
<b>Newspapers</b>	<b>Pueblo RecycleWorks</b> , 1595 Stockyard Rd., 553-2748 <a href="http://www.pueblo.us/recycleworks">www.pueblo.us/recycleworks</a>  See: Recycling bins at <b>Pueblo Community College</b> between Arthur St. and Pitkin Ave.
<b>Office Paper Mixed Paper</b>	See: Household Recycling Recycling bins at <b>Pueblo Community College</b> between Arthur St. and Pitkin Ave.
<b>Packing Material</b>	Recycling bins at <b>Pueblo Community College</b> between Arthur St. and Pitkin Ave.

<b>Paint: Latex, Oil, Stains</b>	<b>D&amp;S Paint Center</b> , 715 West Street, 544-4714 Must have a lid and the original label on the can.  <b>Sherwin-Williams</b> , 3205 N. Elizabeth Street, 544-7812 (No industrial & automotive paint, no aerosol; no paint thinner)  <b>Southern Colorado Services &amp; Recycling</b> , 1731 Erie Ave., 542-6910, accepts spray paint in cans, no empty cans. <a href="http://southerncoloradorecycling.com">southerncoloradorecycling.com</a>
<b>Paper Shredding Services</b> <i>Fees May Apply</i>	<b>AARP Members Service</b> , 924-8662 2401 W. Northern Ave. (& Belmont Ave.) Hours: Monday – Friday: 10:00am – 3:00pm (call first) Free service.  <b>Mobile Record Shredders</b> , 205 N. Elizabeth, 544-5460  <b>Staples</b> , 1411 Hwy 50, 545-1545 (fee charge by weight)
<b>Phonebooks</b>	<b>Pueblo RecycleWorks</b> , 1595 Stockyard Rd., 553-2748 <a href="http://www.pueblo.us/recycleworks">www.pueblo.us/recycleworks</a>  See: Recycling bins at <b>Pueblo Community College</b> between Arthur St. and Pitkin Ave.
<b>Plastic Bags Plastic Film</b>	Most major grocery stores, <b>Kohls</b> , <b>Target</b> , <b>Walmart</b> offer drop-bins at customer service or in front vestibule
<b>Plastic Bottles and Containers</b>	See: Household Recycling
<b>Printer Cartridges</b>	<b>Best Buy</b> , 5890 N. Elizabeth St., 253-0438  <b>Staples</b> , 1411 Hwy 50 West, 545-1545  <b>Target Store</b> , 3300 Dillon Dr., 545-5631

<b>Propane Tanks</b> <i>(small tanks)</i>	<b>Blueflame Gas, Inc.</b> 423 E. Enterprise Dr., Pueblo West, 543-7736  <b>AmeriGas</b> , 805 E. Enterprise Dr., Pueblo West, 547-4444; only accepts 5-gallon tanks.
<b>Refrigerators, Freezers</b> 	See: Appliances <b>3R Technology Solutions</b> , 1045 S. Santa Fe Ave., (720) 645-7497  <b>Appliance King</b> , 305 W. Northern Ave., 545-6472  <b>Broadway Appliance</b> , 2109 E. Evans, 564-3711  <b>Dionisio Metal and Iron</b> , 700 S. Portland Ave., 544-3488, pays market price/pound <a href="http://www.dionisio-metal.com/">http://www.dionisio-metal.com/</a>  <i>Freon must be removed by licensed professional.</i>
<b>Scrap Metal including cans and certain appliances</b>	<b>American Iron &amp; Metal</b> , 1801 S. La Crosse Ave., 542-5865, includes aluminum cans  <b>Dionisio Metal &amp; Iron</b> , 700 S. Portland Ave., 544-3488, includes aluminum cans  <b>Pueblo RecycleWorks</b> , 1595 Stockyard Rd, 553-2748  <b>EVRAZ Inc. Steel Mill</b> , 728 Harlem at Northern Ave., 561-6420, paying for <i>ferrous scrap metal only</i> .
<b>Steel/Tin Cans</b>	<b>Pueblo RecycleWorks</b> , 1595 Stockyard Rd., 553-2748 <a href="http://www.pueblo.us/recycleworks">www.pueblo.us/recycleworks</a>  See: Household Recycling, Scrap Metal
<b>Televisions</b> <i>Fees May Apply</i>	<b>3R Technology Solutions</b> , 1045 S. Santa Fe Ave., (720) 645-7497



<p><b>Thermostats, Mercury</b></p>	<p><b>Ingle Supply</b>, 904 W. 10th (at Blake St.) 543-2612 <a href="http://www.inglesupply.com">www.inglesupply.com</a></p> <p>Bring in entire plastic device, <b>do not remove mercury parts.</b></p>
<p><b>Thrift Stores</b></p>	<p><b>ARC Thrift Store</b>, 1115 S. Prairie Ave, 564-9491 or 301 N. Elizabeth, 543-1006; <a href="http://www.arcthrift.org">www.arcthrift.org</a></p> <p><b>Assistance League Bargain Box</b>, 1112 Pueblo Blvd. Way, 543-1383 <a href="http://www.assistanceleaguepueblo.org/bargainbox.html">www.assistanceleaguepueblo.org/bargainbox.html</a></p> <p><b>Discover Goodwill</b>, 3610 Dillon Dr., 545-0173</p> <p><b>Habitat for Humanity ReStore</b>, 2313 Prairie, 543-0702; <a href="https://hfh-pueblo.org/">https://hfh-pueblo.org/</a></p> <p><b>New Horizons Thrift Store</b>, 2930 N. Elizabeth, 296-9006 <a href="http://www.newhorizonsthriftstores.com">www.newhorizonsthriftstores.com</a></p>
<p><b>Tires, Used</b> <i>Fees May Apply</i></p> 	<p>Many auto service stations and tire change centers accept used tires in small quantities for a fee. Call ahead. Usually, large vehicle and tractor tires are <b>not</b> accepted.</p> <p><b>Anthony's Auto Repair</b>, 58 N. Mission, Pueblo West, 647-0667</p> <p><b>Big O Tires</b>, 430 Eagleridge Blvd., 546-9820</p> <p><b>Discount Tire</b>, 1826 Hwy 50 West, 545-3407 6 Thames Dr., 696-6328</p> <p><b>Pueblo RecycleWorks</b>, 1595 Stockyard Rd, 553-2295 Fees apply. <b>CITY RESIDENTS ONLY</b>, voucher required. No vouchers sold on site.</p> <p><b>Pueblo Tire Recycling</b> (any size tire), 2641 N. I-25, 281-5867</p>

	<p><b>Sam's Club</b> 412 Eagleridge Blvd., 584-3028, Opt. 3 for Tire Center</p>
<p><b>Transfer Station</b></p>	<p><b>C&amp;C Disposal and Recycling</b>, 1401 Quartz Rd., Pueblo (north of Love's Travel Stop) 924-1884 <a href="http://ccdissposalco.com">ccdissposalco.com</a></p>
<p><b>Vermiculture Information, Worm Composting</b></p>	<p><b>Colorado Extension Service</b>, 701 Court St., Suite C, 583-6566 <a href="https://pueblo.extension.colostate.edu/">https://pueblo.extension.colostate.edu/</a></p> <p>The Pueblo County Extension office provides assistance and programs for citizens in five main areas: Agriculture, Horticulture, Family and Consumer Science, Natural Resources and 4-H Youth Programs.</p> <p><b>Colorado Worm Castings</b>, 251-5143 or email: <a href="mailto:mharv2468@gmail.com">mharv2468@gmail.com</a>. See Facebook page for more information.</p>
<p><b>Washer/Dryers</b> <i>Fees may apply</i></p>	<p>See: Scrap Metal, Large Item Drop Off If electric and still in working condition, consider donating to Thrift Stores.</p> <p><b>3R Technology Solutions</b>, 1045 S. Santa Fe Ave., (720) 645-7497</p> <p><b>Pueblo RecycleWorks</b>, 1595 Stockyard Rd, 553-2295, Fees apply. City residents only, voucher required.</p>



**RECYCLING**

**JUST GOT EASIER**